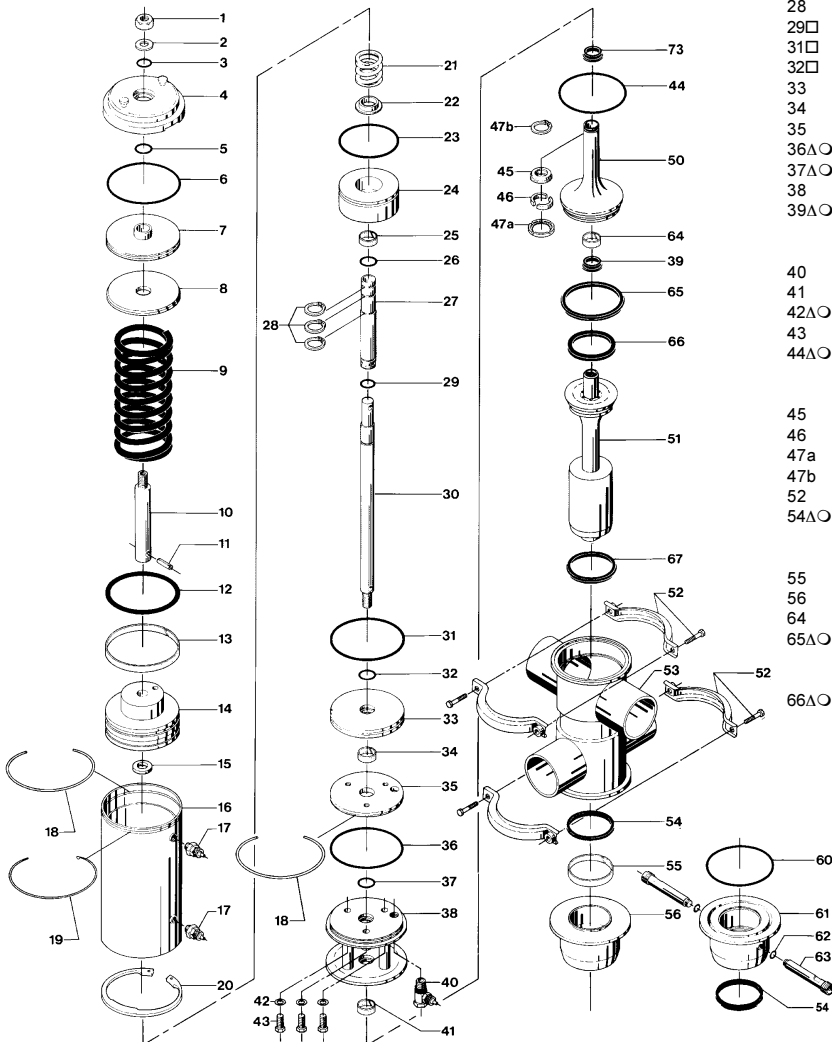


**Sanitary Mixproof Valve, Dome Free
Type SMP-SC – Seal Ring Plug
(51-101.6 mm / NW50-100)**



Pos.	Qty.	Denomination	51-76 mm NW50-65	101.6 mm NW80-100
1	1	Nut	9611-99-2576	9611-99-2576
2	1	Washer	9611-99-0706	9611-99-0706
3□	1	O-ring, NBR	9611-99-0096	9611-99-0096
4	1	Cylinder lid	9612-2916-01	9612-3121-01
5□	1	O-ring, NBR	223406-25	223406-25
6□	1	O-ring, NBR	260104-67	9611-99-2579
7	1	Upper piston	9612-2913-01	9612-3101-01
8	1	Flange	9612-2914-01	9612-3102-01
9	1	Spring	9612-2928-01	9612-3154-01
10	1	Upper piston rod	9612-2910-01	9612-3104-01
11	1	Pin	9611-99-2562	9611-99-1314
12□	1	O-ring, NBR	9611-99-2556	9611-99-2580
13	1	Guide ring, Turcite	9612-2926-01	9612-2926-08
14	1	Main piston	9612-2935-01	9612-3105-01
15	1	Support washer	9612-2911-01	
16	1	Cylinder	9612-2918-01	9612-3137-01
17	2	Air fitting	9611-99-2563	9611-99-2563
18	2	Retaining ring	9612-2929-01	9612-2929-02
19	1	Lock ring	9612-2930-01	9612-3132-01
20	1	Circlip	9611-99-2561	9611-99-2589
21	1	Spring	9612-2927-01	9612-3155-01
22	1	Spring support	9612-2912-01	9612-3106-01
23□	1	O-ring, NBR	9611-99-2568	9611-99-0643
24	1	Piston	9612-2906-01	9612-3107-01
25	1	Guide ring, Turcite		9612-2926-04
26□	1	O-ring, NBR	223406-25	9611-99-2582
27	1	Lower piston rod	9612-2959-01	9612-3134-01
28	3	Circlip	9611-99-2565	9611-99-2588
29□	1	O-ring, NBR	223404-31	223406-25
31□	1	O-ring, NBR	260104-67	9611-99-2580
32□	1	O-ring, NBR	223406-25	9611-99-2581
33	1	Lower piston	9612-2905-01	9612-3147-01
34	1	Guide ring, Turcite		9612-2926-10
35	1	Flange	9612-2915-01	9612-3120-01
36△○	1	O-ring, NBR	260104-67	9611-99-2579
37△○	1	O-ring, NBR	223406-25	9611-99-2581
38	1	Bonnet	9612-4285-01	9612-4257-01
39△○	1	Lip seal, EPDM (Standard)	9612-3205-01	9612-3168-01
	1	Lip seal, NBR	9612-3205-02	9612-3168-02
	1	Lip seal, FPM	9612-3205-03	9612-3168-03
40	1	Air fitting	9611-99-2564	9611-99-2564
41	1	Guide ring, PTFE	9612-2926-11	9612-2926-12
42△○	3	Washer	9611-99-2572	9611-99-2590
43	3	Screw	9611-99-0462	9611-99-1910
44△○	1	O-ring, EPDM (Standard)	9611-99-2931	9611-99-2934
	1	O-ring, NBR	9611-99-2932	9611-99-2935
	1	O-ring, FPM	9611-99-2933	9611-99-2936
45	1	Lock ring	9612-2983-01	9612-3136-01
46	2	Clamp ring	9612-2960-01	9612-3135-01
47a	1	Clip ring	31353-0727-1	
47b	1	Circlip		9611-99-2663
52	2	Clamp complete	9611-31-105-5	9611-31-105-7
54△○	1	Double lip seal, EPDM (Standard) ..	9612-3175-01	9612-3204-01
	1	Double lip seal, NBR	9612-3175-02	9612-3204-02
	1	Double lip seal, FPM	9612-3175-03	9612-3204-03
55	1	Guide ring, PTFE	9612-2926-02	9612-2926-06
56	1	Balancing housing (Standard)	9612-3256-01	9612-3285-01
64	1	Guide ring	9612-2926-13	9612-2926-12
65△○	1	Seal ring, EPDM, (Standard)	9612-3593-03	9612-3593-09
	1	Seal ring, NBR	9612-3593-01	9612-3593-07
	1	Seal ring, FPM	9612-3593-02	9612-3593-08
	1	Seal ring, EPDM, (Standard)	9612-3594-06	9612-3594-03
	1	Seal ring, NBR	9612-3594-04	9612-3594-01
	1	Seal ring, FPM	9612-3594-05	9612-3594-02

**Sanitary Mixproof Valve, Dome Free
 Type SMP-SC – Seal Ring Plug
 (51-101.6 mm / NW50-100)**



Pos.	Qty.	Denomination	51-76 mm NW50-65	101.6 mm NW80-100	Pos.	Qty.	Denomination	51-76 mm NW50-65	101.6 mm NW80-100
67	1	Seal ring, EPDM (Standard)	9612-3593-06	9612-3593-12					
	1	Seal ring, NBR	9612-3593-04	9612-3593-10					
	1	Seal ring, FPM	9612-3593-05	9612-3593-11					
73	1	Lip seal, EPDM (Standard)	9612-3175-04	9612-3204-04					
	1	Lip seal, NBR	9612-3175-05	9612-3204-05					
	1	Lip seal, FPM	9612-3175-06	9612-3204-06					
		CIP-kit for balancing plug complete, EPDM						9611-92-0137	9611-92-0138
	1	Double lip seal, EPDM (Standard)				1	9612-3175-01		9612-3204-01
	1	Guide ring, PTFE				1	9612-2926-02		9612-2926-06
	1	O-ring for CIP, EPDM				1	9611-99-2700		9611-99-2571
	1	Balancing housing for CIP				1	9612-3255-01		9612-3286-01
	2	O-ring, EPDM (Period 9603-)				2	9611-99-3119		9611-99-3119
	2	Washer, Nylon (Period 9501-9603)				2	9611-99-2566		9611-99-2566
	2	Flushing tube (Period 9603-)				2	31357-1017-1		31357-1017-1
	2	Flushing tube (Period 9501-9603)				2	31357-1013-1		31357-1013-1
		Accessories							
	1	Tool complete for actuator				1	9612-3174-01		9612-3174-01

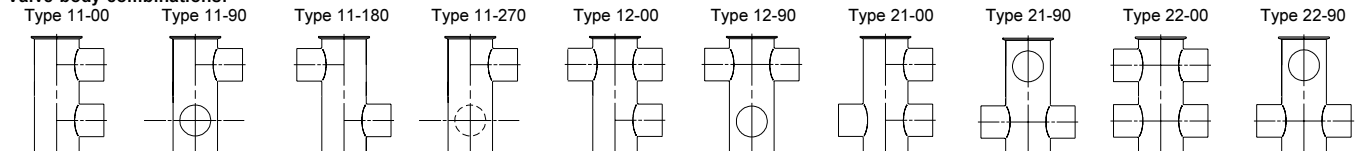
Pos.	Qty.	Denomination	51mm/NW50	63.5mm/NW65	76mm	NW80	101.6mm/NW100
		Actuator complete (Pos. 1-38, 40-44, 73)	9612-4607-03	9612-4607-04	9612-4607-05	9612-4607-12	9612-4607-13
30	1	Inner stem	9612-4276-01	9612-4276-02	9612-4276-03	9612-4276-06	9612-4276-07
50	1	Upper plug	9612-4301-01	9612-4301-02	9612-4301-03	9612-4274-03	9612-4274-04
	1	Upper plug, EPDM (Pos.39+50+64+65+66)	9612-4300-01	9612-4300-04	9612-4300-07	9612-4275-07	9612-4275-10
	1	Upper plug, NBR (Pos.39+50+64+65+66)	9612-4300-02	9612-4300-05	9612-4300-08	9612-4275-08	9612-4275-11
	1	Upper plug, FPM (Pos.39+50+64+65+66)	9612-4300-03	9612-4300-06	9612-4300-09	9612-4275-09	9612-4275-12
51	1	Lower plug	9612-4327-02	9612-4327-03	9612-4327-04	9612-3916-03	9612-3916-02
	1	Lower plug, EPDM (Pos.51+67)	9612-4328-04	9612-4328-07	9612-4328-10	9612-4090-10	9612-4090-07
	1	Lower plug, NBR (Pos.51+67)	9612-4328-05	9612-4328-08	9612-4328-11	9612-4090-11	9612-4090-08
	1	Lower plug, FPM (Pos.51+67)	9612-4328-06	9612-4328-09	9612-4328-12	9612-4090-12	9612-4090-09

- Service kit for actuator**
- 1 Service kit A, NBR 9611-92-0127 9611-92-0130
- Service kit for product wetted parts**
- △ 1 Service kit B, EPDM 9611-92-0238 9611-92-0241
 - △ 1 Service kit B, NBR 9611-92-0239 9611-92-0242
 - △ 1 Service kit B, FPM 9611-92-0240 9611-92-0243
- Service kit for valve with CIP-connection on balancing housing**
- 1 Service kit C, EPDM 9611-92-0244 9611-92-0247
 - 1 Service kit C, NBR 9611-92-0245 9611-92-0248
 - 1 Service kit C, FPM 9611-92-0246 9611-92-0249

Parts marked with □ are included in **Service kit A**.
 Parts marked with △ are included in **Service kit B**.
 Parts marked with ○ are included in **Service kit C**.

Pos.	Qty.	Denomination	51 mm	63.5 mm	76 mm	101.6 mm	NW 50	NW 65	NW80	NW100
53	1	Valve body 11-00	9612-5258-03	9612-5258-13	9612-5258-23	9612-5260-03	9612-5259-03	9612-5259-23	9612-5261-03	9612-5261-23
	1	Valve body 12-00	9612-5258-04	9612-5258-14	9612-5258-24	9612-5260-04	9612-5259-04	9612-5259-24	9612-5261-04	9612-5261-24
	1	Valve body 21-00	9612-5258-07	9612-5258-17	9612-5258-27	9612-5260-07	9612-5259-07	9612-5259-27	9612-5261-07	9612-5261-27
	1	Valve body 22-00	9612-5258-08	9612-5258-18	9612-5258-28	9612-5260-08	9612-5259-08	9612-5259-28	9612-5261-08	9612-5261-28
	1	Valve body 11-90	9612-5258-05	9612-5258-15	9612-5258-25	9612-5260-05	9612-5259-05	9612-5259-25	9612-5261-05	9612-5261-25
	1	Valve body 12-90	9612-5258-06	9612-5258-16	9612-5258-26	9612-5260-06	9612-5259-06	9612-5259-26	9612-5261-06	9612-5261-26
	1	Valve body 21-90	9612-5258-09	9612-5258-19	9612-5258-29	9612-5260-09	9612-5259-09	9612-5259-29	9612-5261-09	9612-5261-29
	1	Valve body 22-90	9612-5258-10	9612-5258-20	9612-5258-30	9612-5260-10	9612-5259-10	9612-5259-30	9612-5261-10	9612-5261-30
	1	Valve body 11-180	9612-5258-01	9612-5258-11	9612-5258-21	9612-5260-01	9612-5259-01	9612-5259-21	9612-5261-01	9612-5261-21
	1	Valve body 11-270	9612-5258-02	9612-5258-12	9612-5258-22	9612-5260-02	9612-5259-02	9612-5259-22	9612-5261-02	9612-5261-22

Valve body combinations:



Recommended Spare Parts: **Service kit**.

**Sanitary Mixproof Valve
Type SMP-SC – Seal Ring Plug
(51-101.6 mm / NW50-100)**



Surface roughness, inside of valve body: Ra ≤ 0.8 μm

Pos.	Qty.	Denomination	51 mm	63.5 mm	76 mm	101.6 mm
53	1	Valve body 11-00.....	9612-5257-03	9612-5257-13	9612-5257-23	9612-5260-13
	1	Valve body 12-00.....	9612-5257-04	9612-5257-14	9612-5257-24	9612-5260-14
	1	Valve body 21-00.....	9612-5257-07	9612-5257-17	9612-5257-27	9612-5260-17
	1	Valve body 22-00.....	9612-5257-08	9612-5257-18	9612-5257-28	9612-5260-18
	1	Valve body 11-90.....	9612-5257-05	9612-5257-15	9612-5257-25	9612-5260-15
	1	Valve body 12-90.....	9612-5257-06	9612-5257-16	9612-5257-26	9612-5260-16
	1	Valve body 21-90.....	9612-5257-09	9612-5257-19	9612-5257-29	9612-5260-19
	1	Valve body 22-90.....	9612-5257-10	9612-5257-20	9612-5257-30	9612-5260-20
	1	Valve body 11-180.....	9612-5257-01	9612-5257-11	9612-5257-21	9612-5260-11
	1	Valve body 11-270.....	9612-5257-02	9612-5257-12	9612-5257-22	9612-5260-12

Pos.	Qty.	Denomination	NW 50	NW 65	NW80	NW100
53	1	Valve body 11-00.....	9612-5259-13	9612-5259-33	9612-5261-03	9612-5261-33
	1	Valve body 12-00.....	9612-5259-14	9612-5259-34	9612-5261-04	9612-5261-34
	1	Valve body 21-00.....	9612-5259-17	9612-5259-37	9612-5261-07	9612-5261-37
	1	Valve body 22-00.....	9612-5259-18	9612-5259-38	9612-5261-08	9612-5261-38
	1	Valve body 11-90.....	9612-5259-15	9612-5259-35	9612-5261-05	9612-5261-35
	1	Valve body 12-90.....	9612-5259-16	9612-5259-36	9612-5261-06	9612-5261-36
	1	Valve body 21-90.....	9612-5259-19	9612-5259-39	9612-5261-09	9612-5261-39
	1	Valve body 22-90.....	9612-5259-20	9612-5259-40	9612-5261-10	9612-5261-40
	1	Valve body 11-180.....	9612-5259-11	9612-5259-31	9612-5261-01	9612-5261-31
	1	Valve body 11-270.....	9612-5259-12	9612-5259-32	9612-5261-02	9612-5261-32



3. (Period 9709 -)

