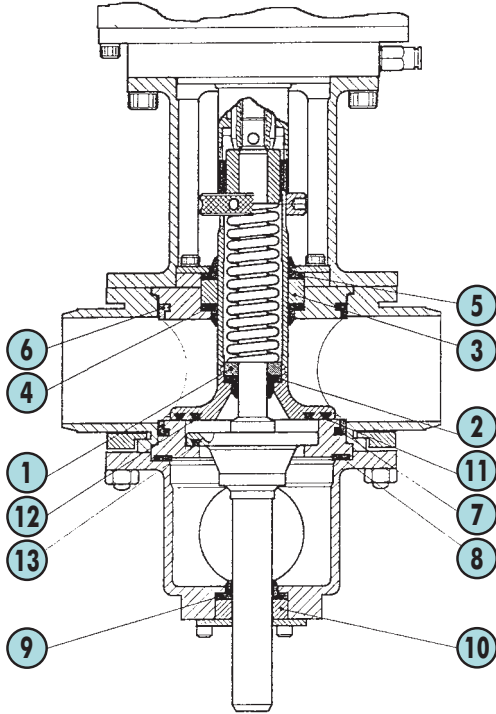
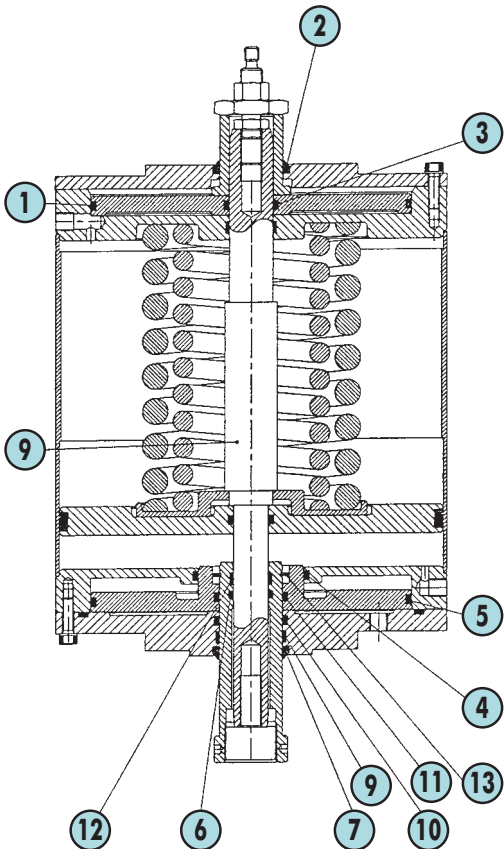


## SPARES – SEAT PULSING VALVE



| VALVE RUNNING SPARES – SEALS AND BEARINGS |          |             |             |             |             |             |
|---|----------|-------------|-------------|-------------|-------------|-------------|
|   |          | 1½"         | 2"          | 2½"         | 3"          | 4"          |
| 1. Inner Bearing                          |          | 4000806011  | 4000806011  | 4000806011  | 4000806011  | 7000806011  |
| 2. Inner Shaft Seal                       | -Nitrile | 4000806003A | 4000806003A | 4000806003A | 4000806003A | 7000806003A |
|   | -EPDM    | 4000806003C | 4000806003C | 4000806003C | 4000806003C | 7000806003C |
|   | -Viton   | 4000806003D | 4000806003D | 4000806003D | 4000806003D | 7000806003D |
| 3. Top Bearing                            |          | 4000806017  | 4000806017  | 4000806017  | 4000806017  | 7000806017  |
| 4. Top Shaft Seal (Inner)                 | -Nitrile | 4000806001A | 4000806001A | 4000806001A | 4000806001A | 7000806001A |
|   | -EPDM    | 4000806001C | 4000806001C | 4000806001C | 4000806001C | 7000806001C |
|   | -Viton   | 4000806001D | 4000806001D | 4000806001D | 4000806001D | 7000806001D |
| 5. Top Shaft Seal (Outer)                 | -Nitrile | 4000806001A | 4000806001A | 4000806001A | 4000806001A | 7000806001A |
|   | -EPDM    | 4000806001C | 4000806001C | 4000806001C | 4000806001C | 7000806001C |
|   | -Viton   | 4000806001D | 4000806001D | 4000806001D | 4000806001D | 7000806001D |
| 6. Top Body Seal                          | -Nitrile | 4000806007A | 4000806007A | 6000806007A | 6000806007A | 7000806007A |
|   | -EPDM    | 4000806007C | 4000806007C | 6000806007C | 6000806007C | 7000806007C |
|   | -Viton   | 4000806007D | 4000806007D | 6000806007D | 6000806007D | 7000806007D |
| 7. Upper Middle Body Seal                 | -Nitrile | 4000806007A | 4000806007A | 6000806007A | 6000806007A | 7000806007A |
|   | -EPDM    | 4000806007C | 4000806007C | 6000806007C | 6000806007C | 7000806007C |
|   | -Viton   | 4000806007D | 4000806007D | 6000806007D | 6000806007D | 7000806007D |
| 8. Lower Middle Body Seal                 | -Nitrile | 4000806014A | 4000806014A | 6000806014A | 6000806014A | 7000806014A |
|   | -EPDM    | 4000806014C | 4000806014C | 6000806014C | 6000806014C | 7000806014C |
|   | -Viton   | 4000806014D | 4000806014D | 6000806014D | 6000806014D | 7000806014D |
| 9. Bottom Shaft Seal                      | -Nitrile | 4000806002A | 4000806002A | 4000806002A | 4000806002A | 4000806001A |
|   | -EPDM    | 4000806002C | 4000806002C | 4000806002C | 4000806002C | 4000806001C |
|   | -Viton   | 4000806002D | 4000806002D | 4000806002D | 4000806002D | 4000806001D |
| 10. Bottom Bearing                        |          | 4000806010  | 4000806010  | 4000806010  | 4000806010  | 7000806010  |
| 11. Upper Poppet Outer Seal               | -Nitrile | 4000806005A | 4000806005A | 6000806005A | 6000806005A | 7000806005A |
|   | -EPDM    | 4000806005C | 4000806005C | 6000806005C | 6000806005C | 7000806005C |
|   | -Viton   | 4000806005D | 4000806005D | 6000806005D | 6000806005D | 7000806005D |
| 12. Upper Poppet Inner Seal               | -Nitrile | 4000806006A | 4000806006A | 6000806006A | 6000806006A | 7000806006A |
|   | -EPDM    | 4000806006C | 4000806006C | 6000806006C | 6000806006C | 7000806006C |
|   | -Viton   | 4000806006D | 4000806006D | 6000806006D | 6000806006D | 7000806006D |
| 13. Lower Poppet Seal                     | -Nitrile | 4000806006A | 4000806006A | 6000806006A | 6000806006A | 7000806006A |
|   | -EPDM    | 4000806006C | 4000806006C | 6000806006C | 6000806006C | 7000806006C |
|   | -Viton   | 4000806006D | 4000806006D | 6000806006D | 6000806006D | 7000806006D |



## SPARES – SEAT PULSING ACTUATOR

| ACTUATOR RUNNING SPARES – PULSING ACTUATOR |            |            |
|--|------------|------------|
|  | 2"         | 3"         |
| 1. Upper Piston Seal                       | 0000870015 | 0000872015 |
| 2. Upper Shaft Scraper Seal                | 0000870021 | 0000872021 |
| 3. Upper Piston Shaft Seal                 | 0000825009 | 0000872022 |
| 4. Lower Piston Inner Seal                 | 0000870017 | 0000872017 |
| 5. Lower Piston Seal                       | 0000870015 | 0000872015 |
| 6. Adjusted Collar Seal                    | 0000825009 | 0000872018 |
| 7. Adjusted Collar Scraper Seal            | 0000870021 | 0000872021 |
| 8. Adjusted Collar Lower Seal              | 0000825011 | 0000825011 |
| 9. End Cap Bearing                         | 0000870019 | 0000872019 |
| 10. End Cap Collar Seal                    | 0000870017 | 0000872017 |
| 11. Lower Piston Inner Seal                | 0000870017 | 0000872017 |
| 12. Adjusted Collar Lower Seal             | 0000825011 | 0000825011 |

Actuator Identification: Size 2 – 142mm dia Size 3 – 219mm dia