

Fristam Self priming Centrifugal Pumps FZ
P U M P E N

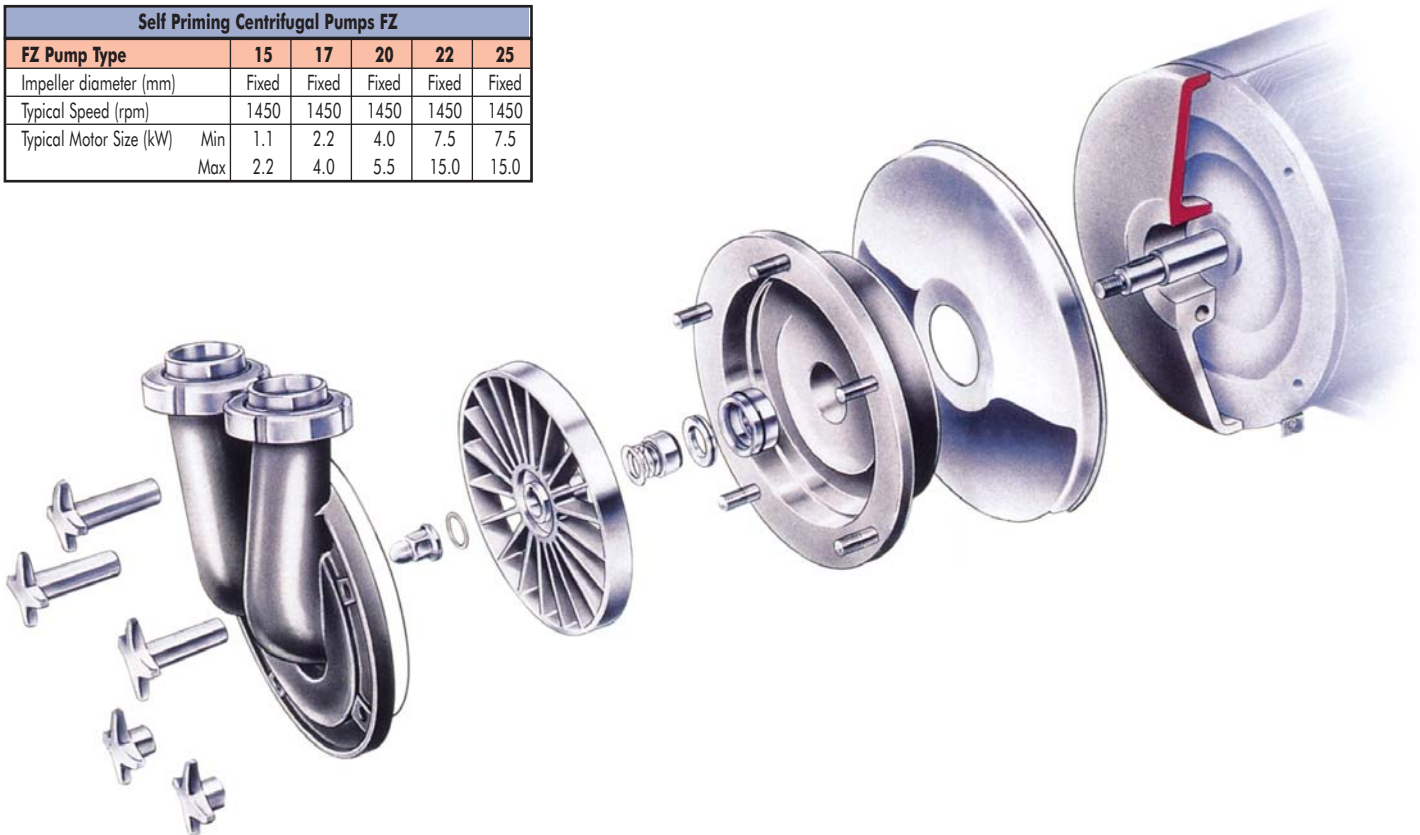


Sizes of FZ

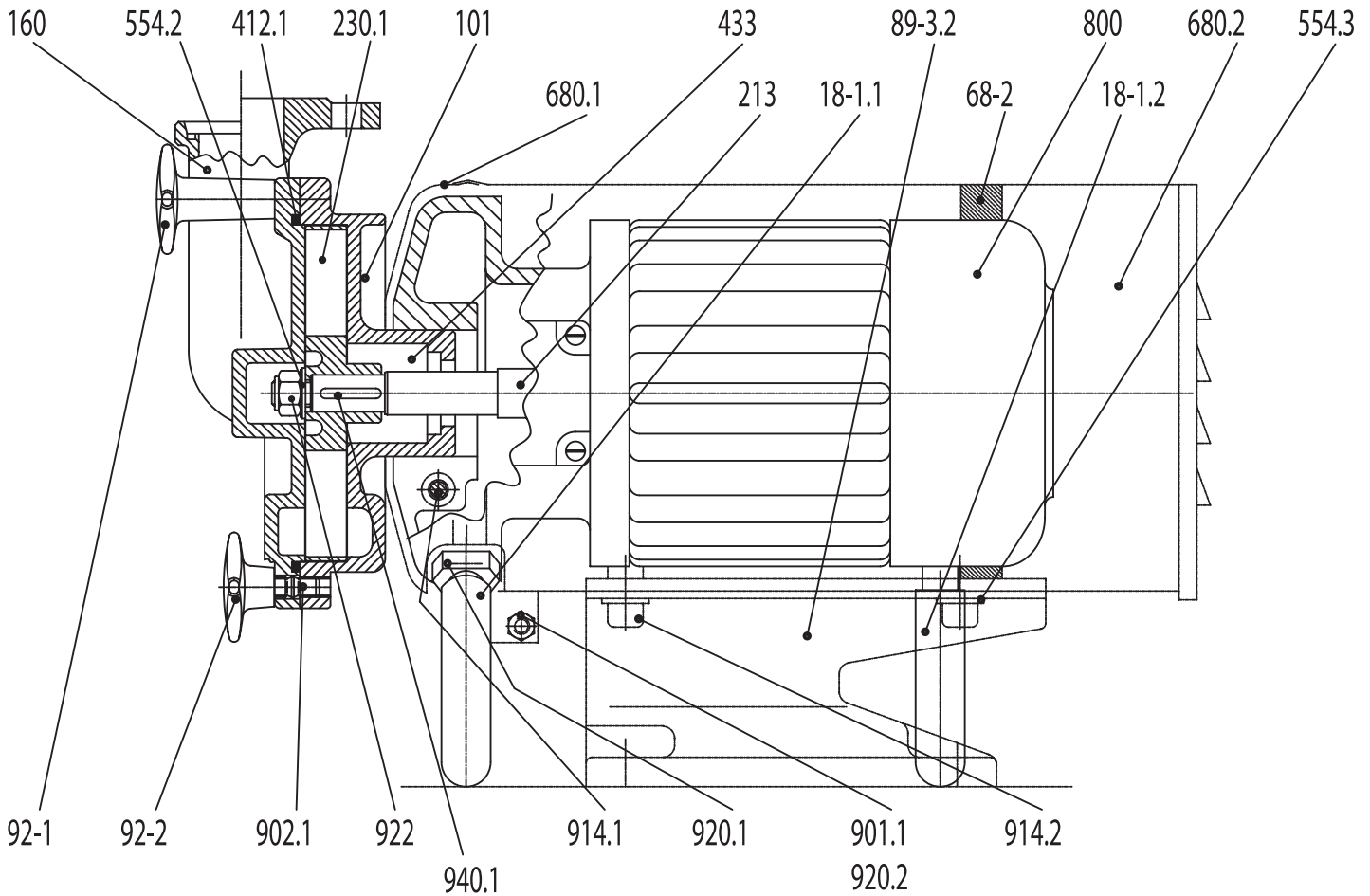


- 6 Sizes
- For system pressures upto 15 bar.
- Discharges pressures up to 4.8 bar
- Flow rates up to 55m³/h

Self Priming Centrifugal Pumps FZ					
FZ Pump Type	15	17	20	22	25
Impeller diameter (mm)	Fixed	Fixed	Fixed	Fixed	Fixed
Typical Speed (rpm)	1450	1450	1450	1450	1450
Typical Motor Size (kW)	Min	1.1	2.2	4.0	7.5
	Max	2.2	4.0	5.5	15.0



Fristam Centrifugal Pumps FZ 15 ABCD - upto 2.2kW
P U M P E N

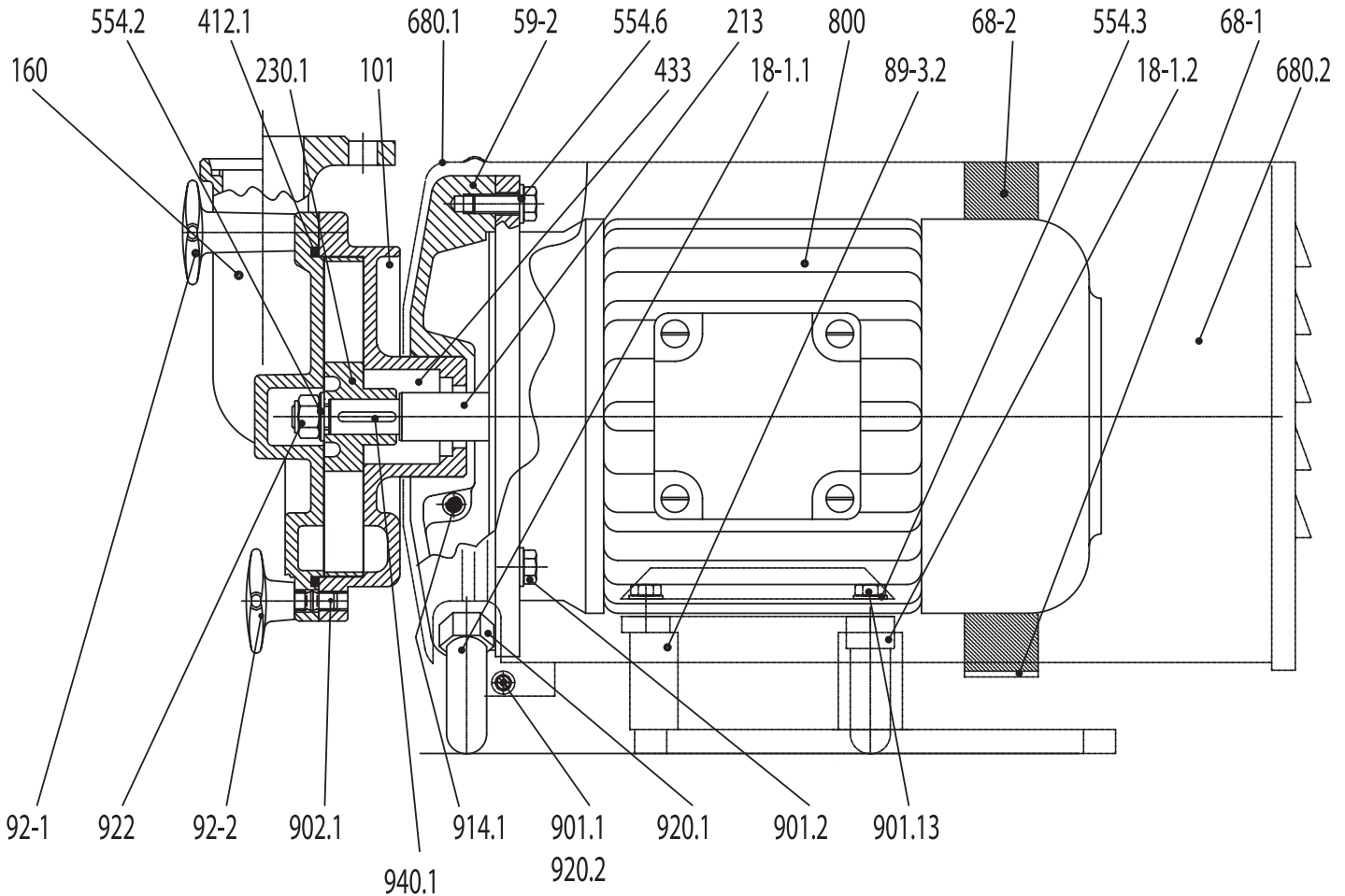


Centrifugal Pumps FZ - 15 - 2.2KW		
Part No.	Piece	Designation
101	1	Pump casing
160	1	Cover
18-1.1	2	Adjustable leg
18-1.2	1	Adjustable leg
213	1	Drive shaft
230.1	1	Impeller
412.1	1	O-ring
433	1	Mechanical seal
554.2	1	Washer
554.3	2	Washer
68-2	1	Foam strip (only for 2.2kW)
680.1	1	Shroud
680.2	1	Shroud

Centrifugal Pumps FZ - 15 - 2.2KW		
Part No.	Piece	Designation
800	1	Motor
89-3.2	1	Motor foot
901.1	1	Hexagon head screw
902.1	3	Stud
914.1	1	Hexagon socket screw
914.2	2	Hexagon socket screw
92-1	1	Short star handle nut
92-2	2	Short star handle nut
920.1	2	Hexagonal nut
920.2	1	Hexagonal nut
922	1	Impeller nut
940.1	1	Key

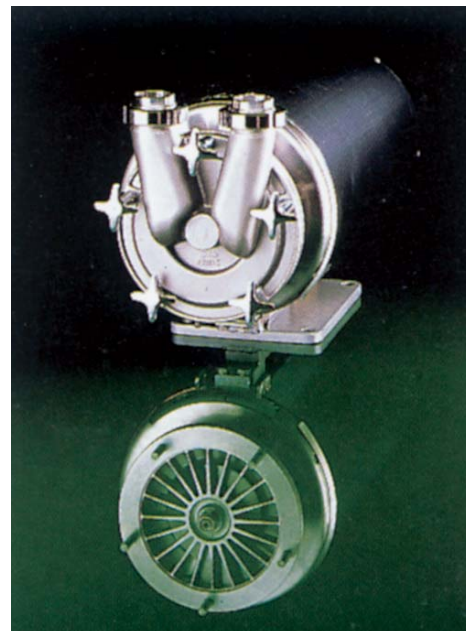


Fristam Centrifugal Pumps FZ 17/20 ABCD - upto 7.5kW
P U M P E N

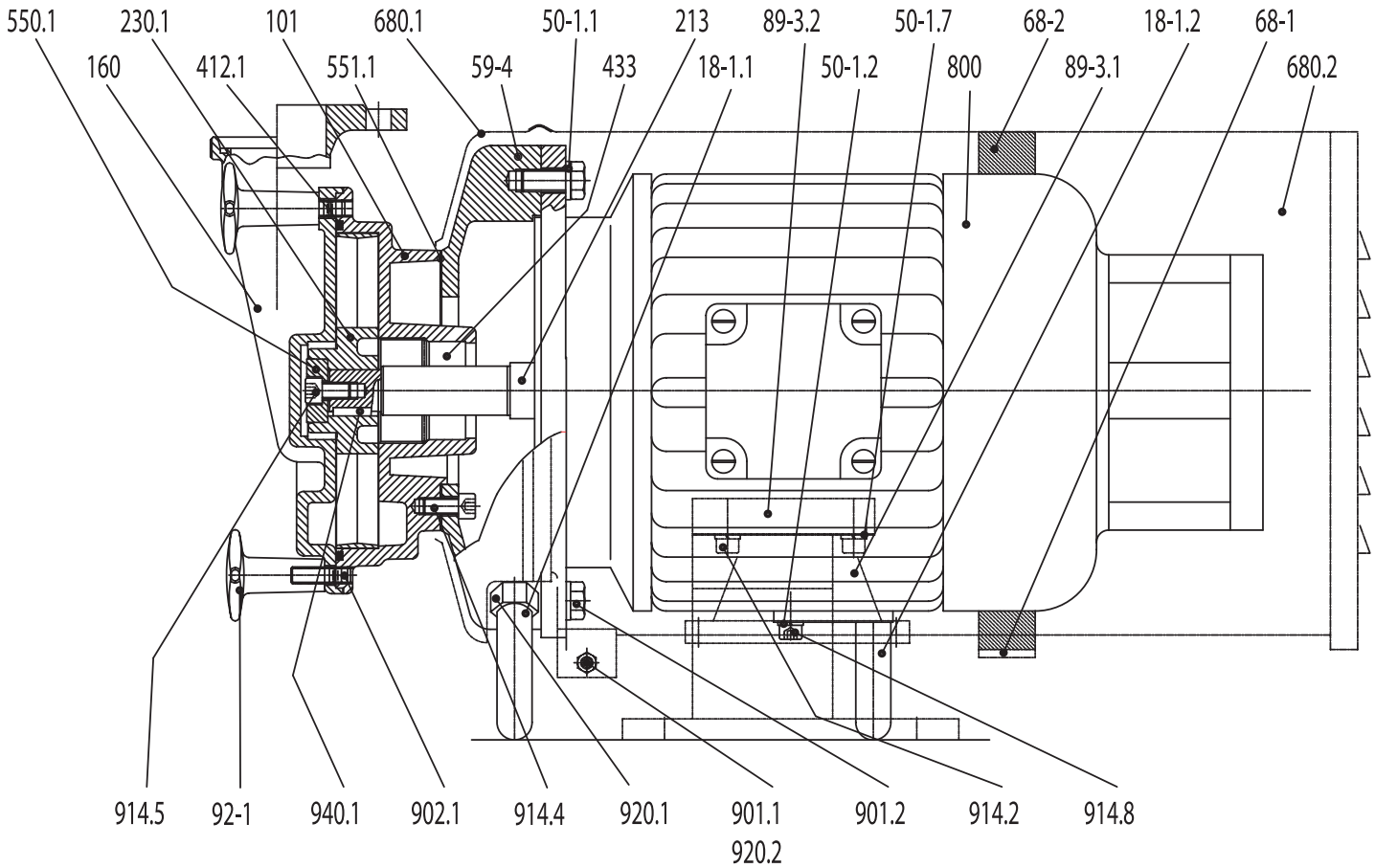


Centrifugal Pumps FZ 17/20 - 7.5kW		
Part No.	Piece	Designation
101	1	Pump casing
160	1	Cover
18-1.1	2	Adjustable leg
18-1.2	1	Adjustable leg
213	1	Drive shaft
230.1	1	Impeller
412.1	1	O-ring
433	1	Mechanical seal
554.2	1	Washer
554.3	2	Washer
554.6	4	Washer
59-2	1	Clamp disc
68-1	1	Sheet metal strip
68-2	1	Foam strip
680.1	1	Cladding

Centrifugal Pumps FZ 17/20 - 7.5kW		
Part No.	Piece	Designation
680.2	1	Cladding
800	1	Motor
89-3.2	1	Motor foot
901.1	1	Hexagon head screw
901.2	4	Hexagon head screw
901.13	2	Hexagon head screw
902.1		Stud
914.1	1	Socket head screw
92-1	1	Short star handle nut
92-2		Short star handle nut
920.1	2	Hexagonal nut
920.2	1	Hexagonal nut
922	1	Impeller nut
940.1	1	Key



Fristam Centrifugal Pumps FZ 22 ABCD - upto 18.5kW
P U M P E N

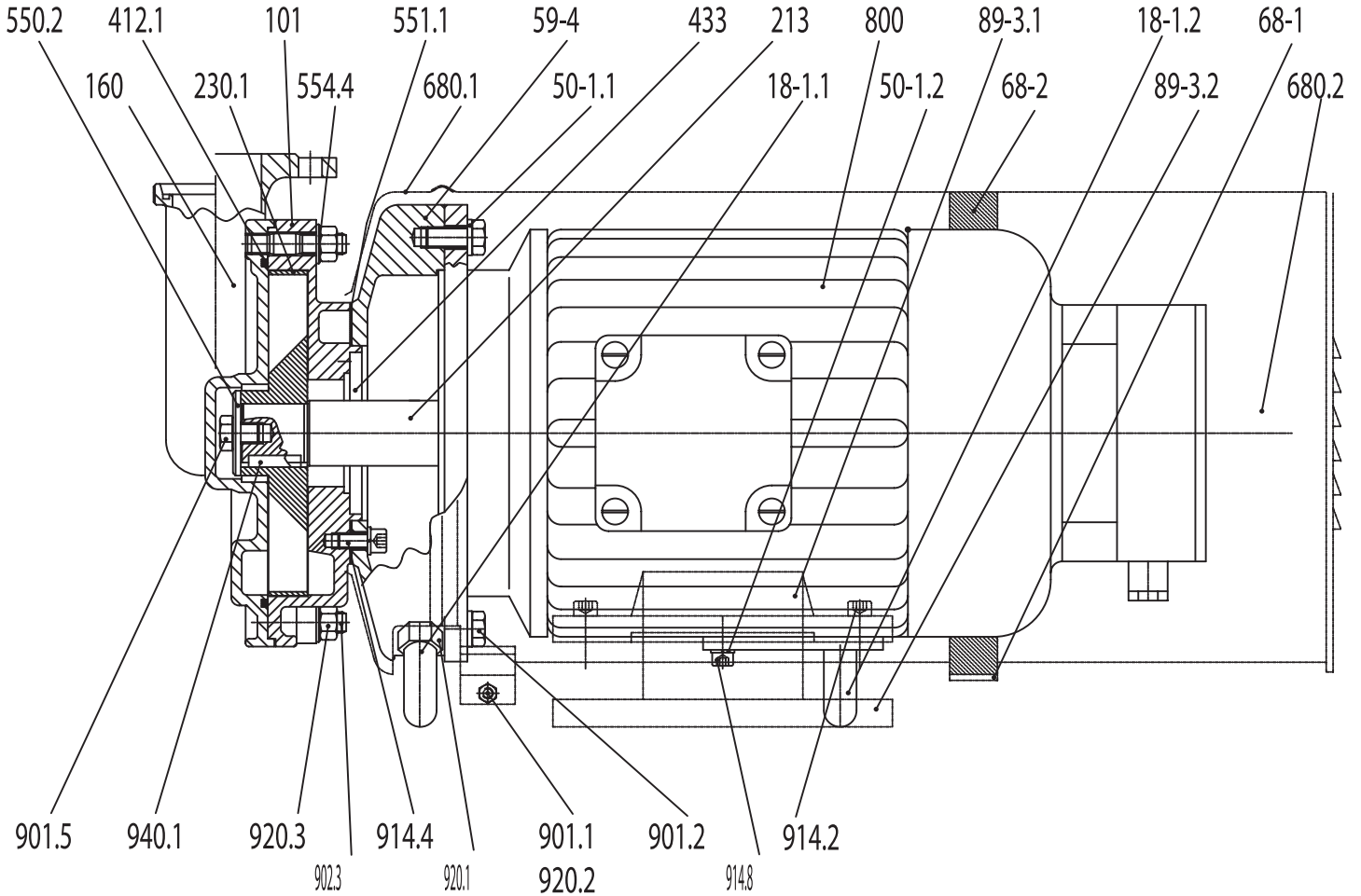


Centrifugal Pumps FZ 22 - 18.5kW		
Part No.	Piece	Designation
101	1	Pump casing
160	1	Cover
18-1.1	2	Adjustable leg
18-1.2	1	Adjustable leg
213	1	Drive shaft
230.1	1	Impeller
412.1	1	O-ring
433	1	Mechanical seal
50-1.1	4	Lock washer
50-1.2	1	Lock washer
50-1.7	4	Lock washer
550.1	1	Disc
551.1	1	Spacer disc
59-4	1	Assembly flange
68-1	1	Sheet metal strip
68-2	1	Foam strip

Centrifugal Pumps FZ 22 - 18.5kW		
Part No.	Piece	Designation
680.1	1	Cladding
680.2	1	Cladding
800	1	Motor
89-3.1	1	Motor foot
89-3.2	1	Motor foot
901.1	1	Hexagon head screw
901.2	4	Hexagon head screw
902.1	5	Stud
914.2	4	Hexagon socket screw
914.4	4	Hexagon socket screw
914.5	1	Hexagon socket screw
914.8	1	Hexagon socket screw
92-1	5	Short star handle nut
920.1	2	Hexagonal nut
920.2	1	Hexagonal nut
940.1	1	Key



Fristam Centrifugal Pumps FZ 25 ABCD - upto 18.5kW
P U M P E N



Centrifugal Pumps FZ 25 - 18.5kW		
Part No.	Piece	Designation
101	1	Pump casing
160	1	Cover
18-1.1	2	Adjustable leg
18-1.2	1	Adjustable leg
213	1	Drive shaft
230.1	1	Impeller
412.1	1	O-ring
433	1	Mechanical seal
50-1.1	4	Lock washer
50-1.2	1	Lock washer
550.2	1	Disc
551.1		Spacer disc
554.4	5	Washer
59-4	1	Assembly flange
68-1	1	Sheet metall strip
68-2	1	Foam strip

Centrifugal Pumps FZ 25 - 18.5kW		
Part No.	Piece	Designation
680.1	1	Cladding
680.2	1	Cladding
800	1	Motor
89-3.1	1	Motor foot
89-3.2	1	Motor foot
901.1	1	Hexagon head screw
901.2	4	Hexagon head screw
901.5	1	Hexagon head screw
902.3	5	Stud
914.2	4	Hexagon socket screw
914.4	4	Hexagon socket screw
914.8	1	Hexagon socket screw
920.1	2	Hexagonal nut
920.2	1	Hexagonal nut
920.3	5	Hexagonal nut
940.1	1	Key

