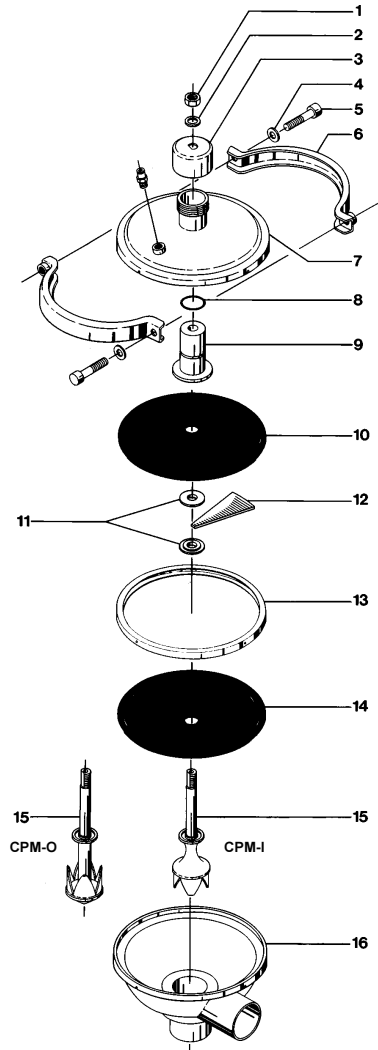


**Constant-Pressure Modulating Valve  
Type CPMI-2 & CPMO-2**



| Pos | Qty. | Denomination                                | CPMI-2-Kv23         | CPMO-2-Kv23         | CPMI-2-Kv2/15       | CPMO-2-Kv2/15       |
|-----|------|---|---------------------|---------------------|---------------------|---------------------|
| 1   | 1    | Nut .....                                   | 221891-15           | 221891-15           | 221891-15           | 221891-15           |
| 2   | 1    | Washer .....                                | 9611-99-2559        | 9611-99-2559        | 9611-99-2559        | 9611-99-2559        |
| 3   | 1    | Top .....                                   | 31356-0003-4        | 31356-0003-4        | 31356-0003-4        | 31356-0003-4        |
| 4   | 2    | Washer .....                                | 9611-99-0786        | 9611-99-0786        | 9611-99-0786        | 9611-99-0786        |
| 5   | 2    | Screw .....                                 | 9611-99-1222        | 9611-99-1222        | 9611-99-1222        | 9611-99-1222        |
| 6   | 2    | Clamp .....                                 | 9612-3352-01        | 9612-3352-01        | 9612-3352-01        | 9612-3352-01        |
| 7   | 1    | Cover .....                                 | 31356-0067-1        | 31356-0067-1        | 31356-0067-1        | 31356-0067-1        |
| 8Δ  | 1    | O-ring, NBR (Standard) .....                | 223406-49           | 223406-49           | 223406-49           | 223406-49           |
|     | 1    | O-ring, FPM .....                           | 9611-99-2253        | 9611-99-2253        | 9611-99-2253        | 9611-99-2253        |
| 9   | 1    | Guide .....                                 | 31356-0072-2        | 31356-0072-2        | 31356-0072-2        | 31356-0072-2        |
| 10Δ | 1    | Upper diaphragm, NBR (Standard) .....       | 31356-0014-2        | 31356-0014-2        | 31356-0014-2        | 31356-0014-2        |
|     | 1    | Upper diaphragm, EPDM/PTFE .....            | 31356-0014-4        | 31356-0014-4        | 31356-0014-4        | 31356-0014-4        |
|     | 1    | Upper diaphragm, PTFE .....                 | 9612-3057-02        | 9612-3057-02        | 9612-3057-02        | 9612-3057-02        |
| 11  | 2    | Inner ring .....                            | 31356-0063-1        | 31356-0063-1        | 31356-0063-1        | 31356-0063-1        |
| 12  | 12   | Support sector .....                        | 31356-0062-1        | 31356-0062-1        | 31356-0062-1        | 31356-0062-1        |
| 13  | 1    | Outer ring .....                            | 9612-3058-01        | 9612-3058-01        | 9612-3058-01        | 9612-3058-01        |
| 14Δ | 1    | Lower diaphragm, EPDM/PTFE (Standard) ..... | 9612-3066-01        | 9612-3066-01        | 9612-3066-01        | 9612-3066-01        |
|     | 1    | Lower diaphragm, PTFE .....                 | 9612-3057-01        | 9612-3057-01        | 9612-3057-01        | 9612-3057-01        |
| 15  | 1    | Valve plug .....                            | 9612-3059-01        | 9612-3060-01        | 9612-3061-01        | 9612-3062-01        |
| 16  | 1    | Valve body, ISO .....                       | 9612-3340-01        | 9612-3341-01        | 9612-3342-01        | 9612-3342-01        |
|     | 1    | Valve body, DIN .....                       | 9612-3343-01        | 9612-3344-01        | 9612-3345-01        | 9612-3345-01        |
| Δ   |      | <b>Service kit .....</b>                    | <b>9611-92-0218</b> | <b>9611-92-0218</b> | <b>9611-92-0218</b> | <b>9611-92-0218</b> |

Parts marked with Δ are included in **Service kit**.