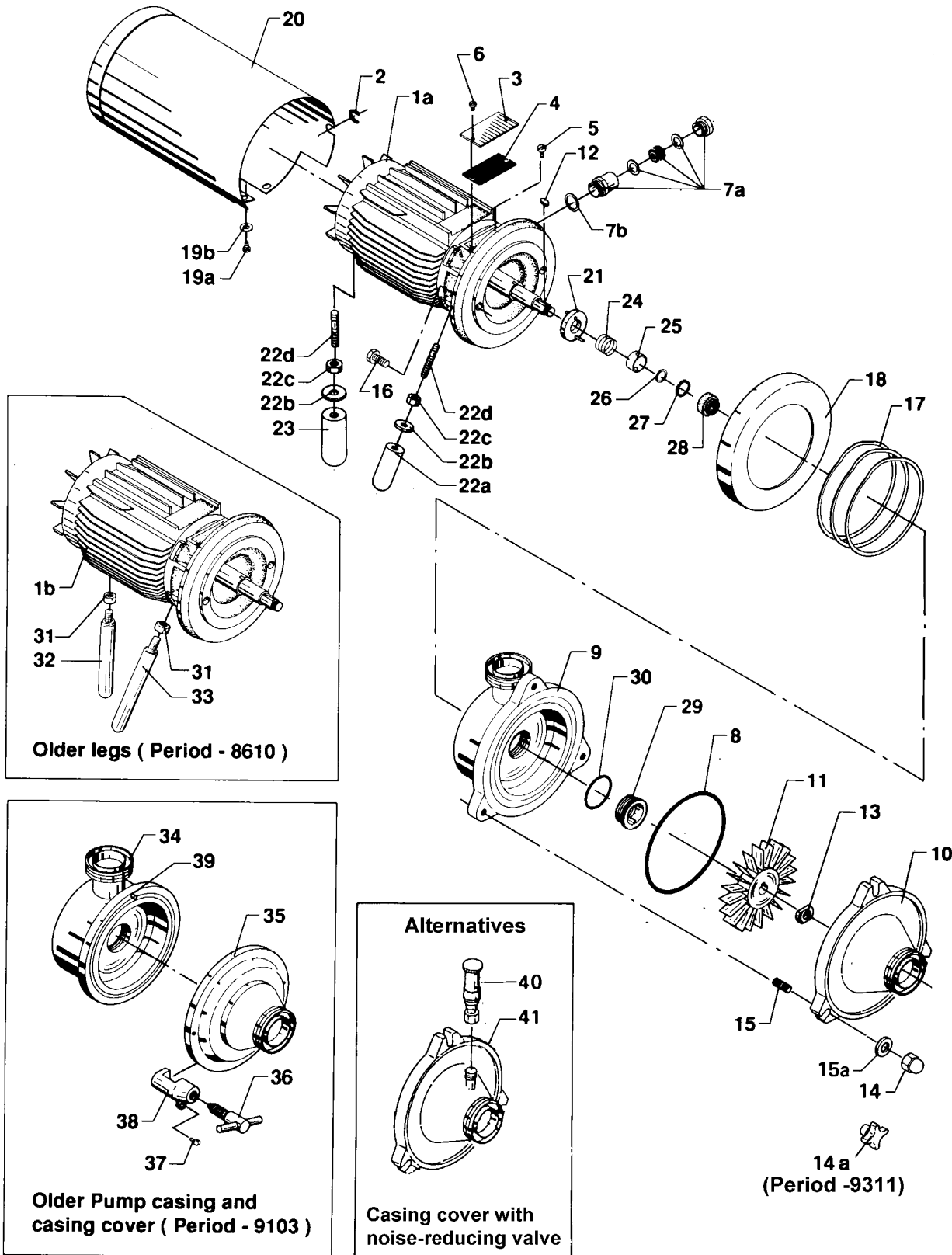


Liquid Ring Pump
Type MR-166B



DW 217-004

Liquid Ring Pump
Type MR-166B



Pos.	Qty.	Denomination	(Period 8610-) MR-166B
1a	1	Motor 2.2 kW 220/380V	31438-0245-1
	1	Motor 2.2 kW	31438-0245-2
		230-260/400-440 V	
1b	1	Motor 2.2 kW 220/380 V	31438-0210-1
		(Period - 8610)	
	1	Motor 2.2 kW	31438-0210-2
		230-260/400-440 V (Period - 8610)	
2	1	Cable protection	31438-0161-1
3	1	Cover	31438-0172-1
4	1	Packing	31438-0173-1
5	1	Set screw for earth wire	221533-02
6	2	Screw	17824
7a	1	Compression gland 22.5 mm	31801-0154-4
7b	1	Packing	31439-0049-1
8Δ	1	O-ring, EPDM (Standard)	31438-0010-1
	1	O-ring, NBR	103395
	1	O-ring, FPM	31438-0010-3
9	1	Pump casing with sanitary fittings. Connections 51 mm	
		ISO male	31438-0396-1
		SMS	31438-0396-2
		DIN	31438-0396-3
		ISO clamp	31438-0396-4
		BS	31438-0396-5
10	1	Casing cover with sanitary fittings. Connection 51 mm	
		ISO male	31438-0395-1
		SMS	31438-0395-2
		DIN	31438-0395-3
		ISO clamp	31438-0395-4
		BS	31438-0395-5
11	1	Impeller	31438-0170-2
12	1	Key	190337
13	1	Nut	31442-0013-1
14	3	Cap nut (Period 9311-)	221851-15
14a	3	Handle (Period -9311)	9611-99-2407
15	3	Stud bolt (Period 9311-)	9612-3635-04
	3	Screw (Period -9311)	9611-99-2408
15a	3	Washer (Period 9311-)	9611-99-0706
16	2	Screw	2210947-16
17	1-2	Shims, 0.1 mm	31438-0039-1
	1-2	Shims, 0.3 mm	31438-0038-1
18	1	Lining	31438-0171-1
19a	4	Screw	2210938-23
19b	4	Washer	9611-99-1831
20	1	Shroud	31439-0169-1
21	1	Thrower	31452-0004-1
22a	2	Front leg	31460-1248-1
22b	3	Washer	31460-0104-1
22c	3	Nut	9611-99-1829
22d	3	Stud bolt	31458-0077-1
23	1	Back leg	31460-1248-3
Alternatives			
40	1	Noise-reducing valve	9612-3641-01
41	1	Casing cover with noise-reducing valve (pos. 40)	
		ISO male	9612-3878-01
		SMS	9612-3878-02
		DIN	9612-3878-03
		ISO clamp	9612-3878-04
		BS	9612-3878-05

Pos.	Qty.	Denomination	MR-166B
		Δ Shaft seal, complete, EPDM (Standard).....	31438-0207-1
24	1	Spring	104154
25	1	Spacer ring	31437-0212-1
26	1	Washer	104125
27	1	O-ring	31439-0168-4
28	1	Rotating seal ring	31437-0211-1
29	1	Stationary seal ring	31438-0076-1
30	1	O-ring	260104-40
		Δ Shaft seal, complete, NBR	31438-0207-2
24	1	Spring	104154
25	1	Spacer ring	31437-0212-1
26	1	Washer	104125
27	1	O-ring	31439-0168-1
28	1	Rotating seal ring	31437-0211-1
29	1	Stationary seal ring	31438-0076-1
30	1	O-ring	223406-59
		Δ Shaft seal, complete, FPM	31438-0207-3
24	1	Spring	104154
25	1	Spacer ring	31437-0212-1
26	1	Washer	104125
27	1	O-ring	31439-0168-5
28	1	Rotating seal ring	31437-0211-1
29	1	Stationary seal ring	31438-0076-1
30	1	O-ring	260104-06
Accessories (Delivered with every new pump)			
	1	Spanner for stationary seal ring	31438-0335-1
Older legs (Period - 8610)			
31	3	Lock nut	2218043-18
32	1	Back leg	31439-0146-1
33	2	Front leg	31439-0146-2
Older parts (Period -9103)			
34	1	Pump casing with sanitary fittings. Connections 51 mm	
		ISO male	31438-0217-1
		SMS	31438-0217-2
		DIN	31438-0217-3
		ISO clamp	31438-0217-4
		BS	31438-0217-5
35	1	Casing cover with sanitary fittings. Connection 51 mm	
		ISO male	31438-0220-1
		SMS	31438-0220-2
		DIN	31438-0220-3
		ISO clamp	31438-0220-4
		BS	31438-0220-5
36	2	Clamp screw	31452-0097-1
37	2	Screw	221126-09
38	2	Clamp	31438-0205-1
39	1	Cylindrical pin	222111-13
Δ		Service kit, EPDM.	9611-92-1078
Δ		Service kit, NBR.	9611-92-1079
Δ		Service kit, FPM.	9611-92-1080

Parts marked with Δ are included in the Service kits.