

APV Plate Heat Exchanger Manual Frame

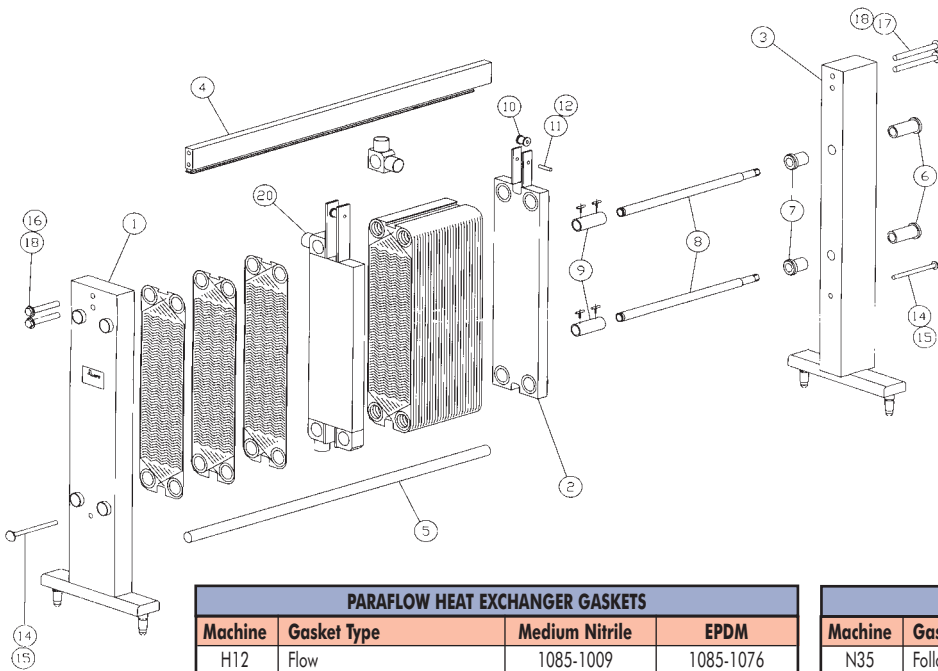


PLATE HEAT EXCHANGER - BASIC MANUAL FRAME	
Item	Description
1	Head
2	Follower
3	End Support
4	Top Carrying Bar Assembly
5	Bottom Carrying Bar Assembly
6	Jack Nut Retainer
7	Jack Nut
8	Tightening Screw
9	Spacer Tube Assembly
10	Top Bar Roller
11	Top Bar Roller Axle
12	Circlip retainer
13	Bolt (Hex Head)
14	Bolt (Hex Head)
15	Washer
16	Bolt (Hex Head)
17	Bolt (Hex Head)
18	Washer

PARAFLOW HEAT EXCHANGER GASKETS			
Machine	Gasket Type	Medium Nitrile	EPDM
H12	Flow	1085-1009	1085-1076
	End	1085-1009(x2)	1085-1076(x2)
	Head Port Ring	1085-1173	1085-1181
	Follower Port Ring	1085-1025	1085-1114
	Head Rubber Sleeves	1084-1615	1084-1623
	Follower Rubber Sleeves	1084-0503	1084-0570
H17	Flow Glued	1075-1004	1075-1039
	Flow Clip	1075-1411	1075-1438
	Flow Duo-Safety	1075-1640	1075-1624
	End	1075-1004(x2)	1075-1039(x2)
	Head Port Ring	1085-1173	1085-1181
	Follower Port Ring	1085-1025	1085-1114
	Head Rubber Sleeves	1084-1615	1084-1623
	Follower Rubber Sleeves	1084-0503	1084-0570
HMB	RH Flow	413073	421119
	LH Flow	413072	421120
	End	413278	421121
	Port Ring	413279	421122
HX	Retarder	413277	413277
	RH Flow	413067	421113
	LH Flow	413066	421114
	End	413271	421115
K55	Port Ring	413272	421116
	Retarder	413268	413268
	Flow Glued	1055-1005	1055-1021
	Flow Clip/Duo-Safety	1055-1285	1055-1293
	End	1055-1005(x2)	1055-1021(x2)
K71	Head Port Ring	1055-1064	1055-1072
	Follower Port Ring	1055-1013	1055-1056
	Flow Glued	1057-5001	1057-5028
	Flow Clip/Duo-Safety	1057-5060	1057-5079
	End	1057-5001(x2)	1057-5028(x2)
N35	Head Port Ring	1055-1064	1055-1072
	Follower Port Ring	1055-1013	1055-1056
	Flow Glued	1725-1007	1725-1015
	Flow Clip	1725-1759	1725-1767
	Flow Duo-Safety	1725-2038	1725-2046
N35 (cont)	End	1725-1007(x2)	1725-1015(x2)
	Head Port Ring	1725-1503	1725-1511

PARAFLOW HEAT EXCHANGER GASKETS			
Machine	Gasket Type	Medium Nitrile	EPDM
N35 (cont)	Flow Glued	1725-1007	1725-1015
	Flow Clip	1725-1759	1725-1767
	Flow Duo-Safety	1725-2038	1725-2046
	End	1725-1007(x2)	1725-1015(x2)
	Head Port Ring	1725-1503	1725-1511
	Head Port Ring	1725-1023	1725-1082
R5	Follower Port Ring	1025-1230	1025-1370
	Rubber Sleeve Head	1725-1066	1725-1112
	Rubber Sleeves Follow	1725-1031	1725-1090
	RH Flow Glued	413089	421249
	LH Flow Glued	413084	421250
	RH Flow Clip	421704	421706
SR2	LH Flow Clip	421705	421707
	RH End	413007	421247
	LH End	413010	421248
	Port Ring	413863	421251
	Flow Clip	421713	421715
	End Clip	421714	421716
SR3	Port Ring (SR25/26 Thick)	421390	421389
	Port Ring (SR20/Grid Thin)	421450	421451
	Flow Glued	449164	449165
	Flow Clip	421712	421721
	End	449167	449168
	Port Ring	413775	413775
SR6	Support Pad	457850	413776
	Liner BS 4505	415283	415285
	Liner ANSI	415284	415286
	GH Flow	421415	421417
	GL Flow	421342	421344
	AG Flow	421419	421421
	AA Flow	421423	421425
	GL Flow Brewery	SR6GLXFBXXXXNSA	
	GH Flow Clip	421708	421717
	GL Flow Clip	421709	421718
	AG Flow Clip	421710	421719
	AA Flow Clip	421711	421720
GL Flow Brewery Clip	SR6GLXFBXXXXNCA		
GH End	421416	421418	
GL End	421339	421341	
AG End	421420	421422	
AA End	421424	421426	
Port Rings	421345	421347	
Pair of Support Pads (Triangle)	422200	422200	
Set of H/P Support Pads	422204	422204	