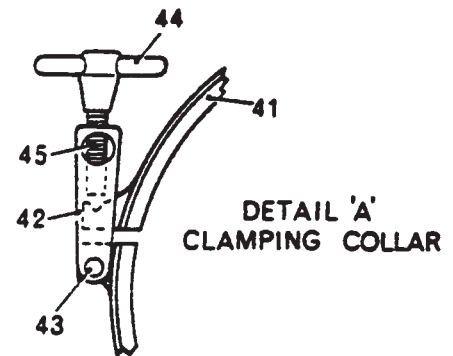
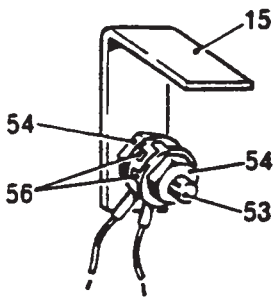
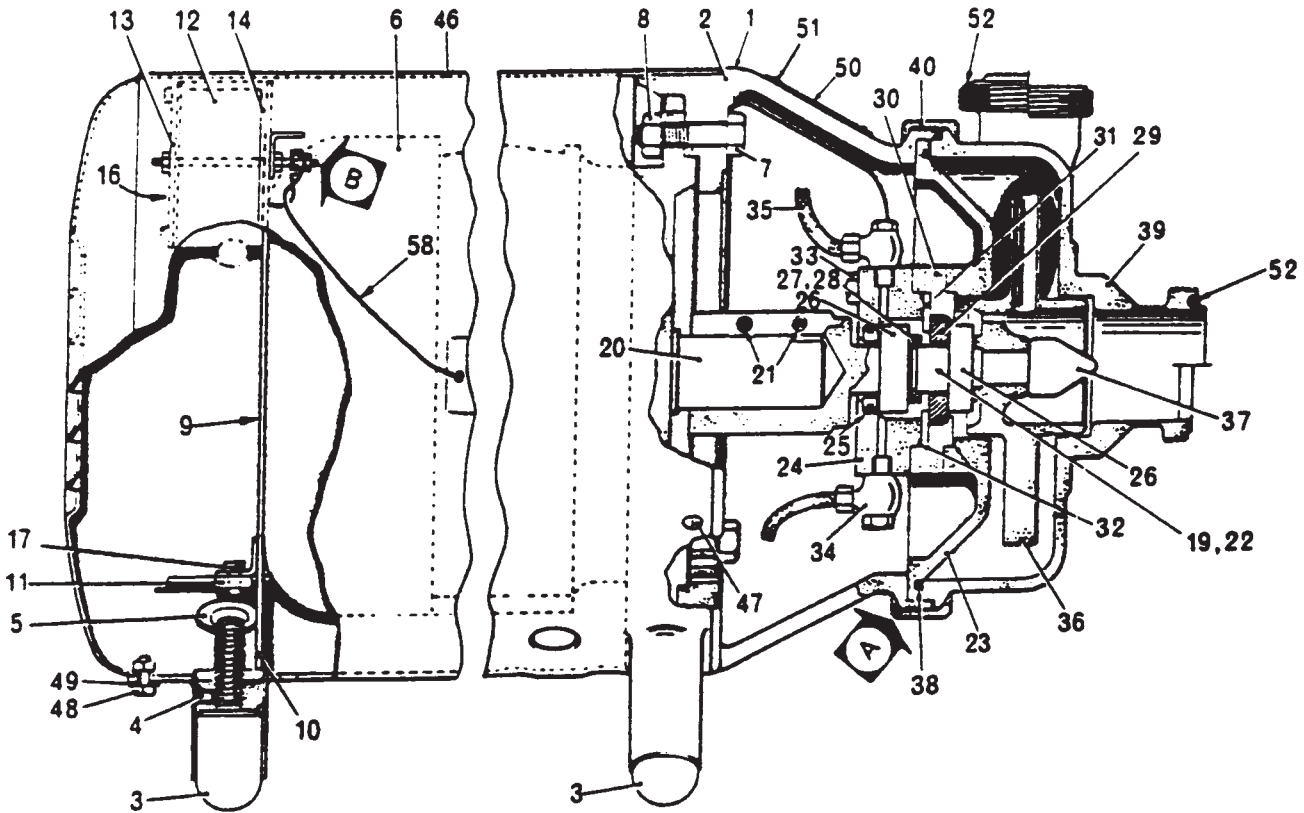


APV Puma Pump Series IV



Pump assembly (Series IV)



Puma Pump Series IV (contd)

PUMA PUMP SERIES IV (PAGE 7)				
ITEM	DESCRIPTION	No. off	2/3/9 SHR'D	2/3/11 SHR'D
Page 7				
1	PUMP COMPLETE Frame ass'y, supporting 3 h.p. motor 5.5 h.p. motor 7.5 & 10 h.p. motor	1 - - -	- 206552 206554 206556	- - 206558 206560
2	Frame sub-ass'y, welded, comprising:- - base (C/N 226241), frame (C/N 321985) and cover plate (C/N 339177) for 3 h.p. motor with 9 in. body - base (C/N 226241), frame (C/N 321986) and cover plate (C/N 339178) for 5.5 h.p. motor with 9 in. body - base (C/N 226241), frame (C/N 321988) and cover plate (C/N 339178) for 5.5 h.p. motor with 11 in. body - base (C/N 226241), frame (C/N 321987) and cover plate (C/N 339179) for 7.5 & 10 h.p motor with 9 in. body - base (C/N 226241), frame (C/N 321989) and cover plate (C/N 339179) for 7.5 & 10 h.p motor with 11 in. body	1 - - - - -	- - - - - -	- - - - - -
3	Foot, adjustable	3	337600	337600
4	Grub-screw, 2 BA x 1/2 in. l'g. slot h'd.	3	434110	434110
5	Grommet, 1 1/4 in. o.d. x 3/4 in. i.d.	1	410500	410500
6	Motor, electric, Brook, 3-ph, 50 or 60 c/s a.c. 3 h.p. (2.2 kw) 220/380-420 V 5.5 h.p. (4.0 kw) 220/380 V 5.5 h.p. (4.0 kw) 380/420 V 7.5 h.p. (5.5 kw) 220/380 V 7.5 h.p. (5.5 kw) 380/420 V 10h.p. (7.5 kw) 220/380 V 10h.p. (7.5 kw) 380/420 V	1 - - - - - - -	- 457100 457102 457103 457104 457105 457106 457107	- - 457102 457103 457104 457105 457106 457107
7	Set-screw 3/8 in. BSW x 1 1/4 in. l'g. hex. h'd. 1/2 in. BSW x 2 in. l'g. hex. h'd.	4 - -	- 431645 431666	- - 431666
8	Nut, hex. 3/8 in. BSW 1/2 in. BSW	4 - -	- 417865 417867	- - 417867
9	Plate ass'y, baffle and terminal box	1	228543	228543
10	Plate sub-ass'y, baffle	1	339274	339274
11	Clip	2	314253	314253
12	Terminal Box	1	462036	462036
13	Cover	1	462035	462035
14	Gasket	1	322555	322555
15	Earth Terminal Tag	1	457831	457831
16	Warning Label	1	414211	414211
17	Screw, Ch. H'd., OBA x 1/2 in. long	2	452601	452601
18	Screw, Ch. H'd., M4 x 25 mm long	†	461101	461101
53	Studding - M4 x 65 mm long	1	437686	437686
54	Nut, hex., standard M4	25	460215	460215
55	Washer, plain, standard M4	†	460315	460315
56	Clamping washer, copper	28	444152	444152
57	Set Screw, hex. h'd., M4 x 25 mm long	†	460070	460070
58	Earth Cable Ass'y, Type 'B'	1	442011	442011
19	Seal ass'y, Cyclam Aseptic and Seal Fitting 3 h.p. motor 5.5 h.p. motor 7.5 & 10 h.p. motor	1 - - -	- 244049 244050 244051	- - 244050 244051

†† not illustrated ○ contained in spares pack ● recommended spare * with pressure balance holes † without pressure balance holes

APV Puma Pump Series IV (contd)

PUMA PUMP SERIES IV (PAGE 7)				
ITEM	DESCRIPTION	No. off	2/3/9	2/3/11
Page 7			SHR'D	SHR'D
20	Shaft, stub	1	-	-
	3 h.p. motor	-	354309	-
	5.5 h.p. motor	-	354307	354307
	7.5 & 10 h.p. motor	-	354308	354308
21	Screw, cap	2	-	-
	$\frac{1}{4}$ in. BSF x $\frac{3}{4}$ in. l'g. skt. h'd. (3 and 5.5 h.p. motor)	-	445244	445244
	$\frac{5}{16}$ in. BSF x 1 in. l'g. skt. h'd. (7.5 and 10 h.p. motor)	-	445245	445245
22	Seal, sub-ass'y	1	244048	-
23	Backplate	1	338818	338817
24	Housing, rear	1	324904	324904
25	Plate ass'y, seal face, Cyclam type AD 2550 10 TANX 14	1	356067	356067
26	Seal, Cyclam Aseptic type AD 2547 13 PRN 14K	2	459149	459149
27	Collar	1	314682	314682
28	Grub-screw, 2 BA x $\frac{1}{4}$ in. l'g. slot h'd	2	434106	434106
29	Plate ass'y, seal face, Cyclam type AD 2557 10 TBNX 14	1	356068	356068
30	Housing, front	1	324903	324903
31	Ring, retaining	1	345088	345088
32	Gasket	2	449115	449115
33	Bolt, hex. h'd., $\frac{5}{16}$ in. BSF x $2\frac{1}{4}$ in. l'g.	3	403219	403219
34	Banjo and bolt ass'y, $\frac{1}{4}$ in. BSP	2	400146	400146
35	Hose, $\frac{1}{2}$ in. i.d. x 18 in. l'g. c/w end fittings	2	410922	410922
36	Impeller, with $\frac{7}{8}$ in. (22 mm) dia. discharge holes	1	-	-
	5 in. (127 mm) size	-	325864*	-
		-	325852†	-
	5½ in. (140 mm) size	-	325863*	-
		-	325851†	-
	6 in. (152 mm) size	-	325862*	-
		-	325850†	-
	6½ in. (165 mm) size	-	325861*	-
		-	325849†	-
	7 in. (178 mm) size	-	325860*	-
		-	325848†	-
	7½ in. (191 mm) size	-	325859*	325859*
	-	325847†	325847†	
8 in. (203 mm) size	-	-	325858*	
	-	-	325845†	
8½ in. (216 mm) size	-	-	325857*	
	-	-	325844†	
9 in. (229 mm) size	-	-	325856*	
	-	-	325843†	
9½ in. (241 mm) size	-	-	325855*	
	-	-	325842†	
37	Nut, impeller	1	213526	213526
38	Sealing ring for body joint	1	413800	413858
39	Body ass'y	1	-	-
	with RJT fittings	-	200798	207100
	with ISS fittings	-	200799	207101
	with CLAMP fittings	-	207669	207670
	without fittings	-	308454	308464
40	Collar ass'y, clamping	1	228717	228718
41	Collar	1	228713	228713
42	Fork	1	321814	321814
43	Pin	1	338611	338611

†† not illustrated ○ contained in spares pack ● recommended spare * with pressure balance holes † without pressure balance holes



Puma Pump Series IV (contd)

PUMA PUMP SERIES IV (PAGE 7)				
ITEM	DESCRIPTION	No. off	2/3/9 SHR'D	2/3/11 SHR'D
44	T-Bolt	1	310177	310177
45	Pin, cross	1	338350	338350
46	Shroud ass'y	1	227417	227417
47	Set-screw, 2 BA x 3/8 in. l'g. r'd. h'd.	2	432410	432410
48	Bolt, 1/4 in. BSW x 1/2 in. l'g. hex. h'd.	1	431625	431625
49	Washer, plain, 1/4 in. i.d.	1	443816	443816
50	Nameplate	1	-	-
	(in English)	-	457808	457808
	(in German)	-	457812	457812
51	Screw, hammer drive, No. 4 x 3/12 in. l'g. r'd. h'd.	4	434261	434261
52	Ring, joint	-	-	-
	2 in. size	1	413510	413510
	3 in. size	1	413514	413514
	Special Tools	††		
	Spanner, for impeller nut	1	438928	438928
	Key, hex, wrench, 3/16 in. A/F, for stub shaft securing screws on 3 and 5.5 h.p. motors	1	414105	414105
	Key, hex, wrench, 7/32 in. A/F, for stub shaft securing screws on 7.5, 10, 15 and 20 h.p. motors	1	414106	414106
	Fitting	1	353319	353319
	O-ring for installation of Cyclam seal face plate into housings	1	426515	426515
	O-ring	1	426509	426509
	Sleeve for ass'y of Cyclam seals onto stub shaft	1	353320	353320
	Ring, tapered	1	353321	353321

†† not illustrated ○ contained in spares pack ● recommended spare * with pressure balance holes † without pressure balance holes

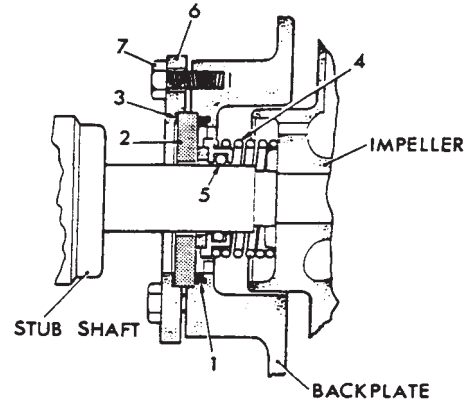


Puma Pump Series IV Illustrated Parts List

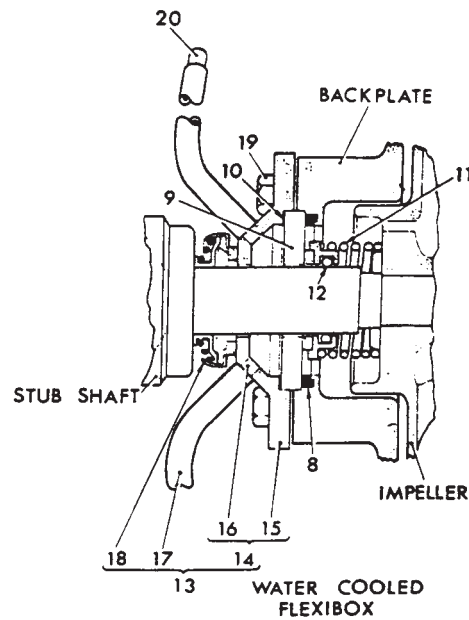
PUMA PUMP SERIES IV			
ITEM	DESCRIPTION	No. off	Code No.
SEAL ARRANGEMENTS			
NON-WATER COOLED FLEXIBOX SEAL			
1	Ring, sealing, seal face plate	• 1	413812
2	Plate, seal face	• 1	320303
3	Ring, sealing, housing	1	444000
4	Seal ass'y, Flexibox type R 2540 - 57R	• 1	427840
5	O-ring	• 1	426573
6	Housing, plate	1	344394
7	Set-screw, $\frac{5}{16}$ in. BSF x $\frac{3}{4}$ in. lg. hex. hd.	3	431724
WATER COOLED FLEXIBOX SEAL			
8	Ring, sealing, seal face plate	* • 1	413812
9	Plate, seal face	* 1	320303
10	Ring, sealing, housing	* • 1	444000
11	Seal ass'y, Flexibox type R 2540 - 57R	* • 1	427840
12	O-ring	* • 1	426573
13	Seal ass'y, water cooling	1	244026
14	Housing ass'y	1	208836
15	Housing	1	325099
16	Tube, $\frac{1}{4}$ in. o.d. x 20 swg x 1.0 in. lg.	2	353158
17	Tube, $\frac{3}{8}$ in. o.d. x $\frac{1}{4}$ in. i.d. x 18 in. lg.	2	182615
18	Seal, Cyclam type AD NIB 254713 PR	• 1	427866
19	Set-screw, $\frac{5}{16}$ in. BSF x $\frac{3}{4}$ in. lg. hex. hd.	* 3	431724
20	Adaptor, $\frac{3}{8}$ in. o.d. tube x $\frac{1}{8}$ in. BSP	2	406418
STUFFING BOX SEAL (Special order only)			
1	Ring, sealing, seal face plate	* • 1	413812
21	Housing	1	344394
22	Gland, split	1	322612
23	Box ass'y, stuffing	• 1	201238
24	Washer, packing	• 2	444024
25	Ring, gland packing, Crane	• 5	426637
26	Set-screw, $\frac{5}{16}$ in. BSF x $\frac{3}{4}$ in. lg. hex. hd.	3	431724
27	Screw, skt. hd. cap. $\frac{5}{16}$ in. BSF x $\frac{3}{4}$ in. lg.	3	445236
28	Adaptor, $\frac{3}{8}$ in. o.d. tube x $\frac{1}{8}$ in. BSP	4	406418
29	Tube, $\frac{3}{8}$ in. o.d. x $\frac{1}{4}$ in. i.d. x 18 in. lg.	2	182615
30	Plug, blanking, $\frac{1}{8}$ in. BSP	2	424343

- * Common to non-water cooled Flexibox seal arrangement
- recommended spare

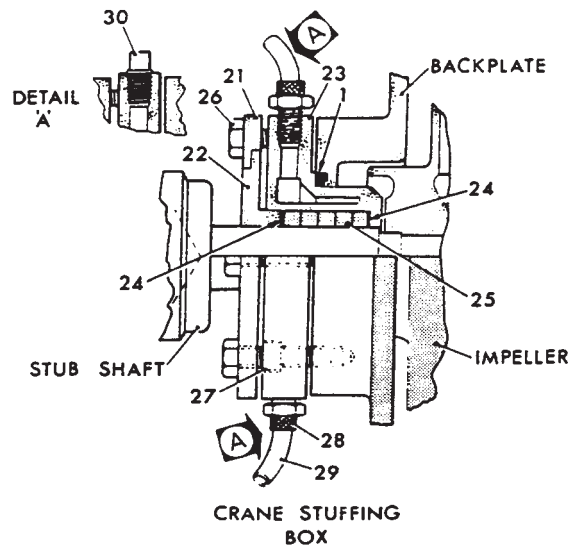
Seal Arrangements (Series IV)



NON-WATER COOLED FLEXIBOX



WATER COOLED FLEXIBOX



CRANE STUFFING BOX