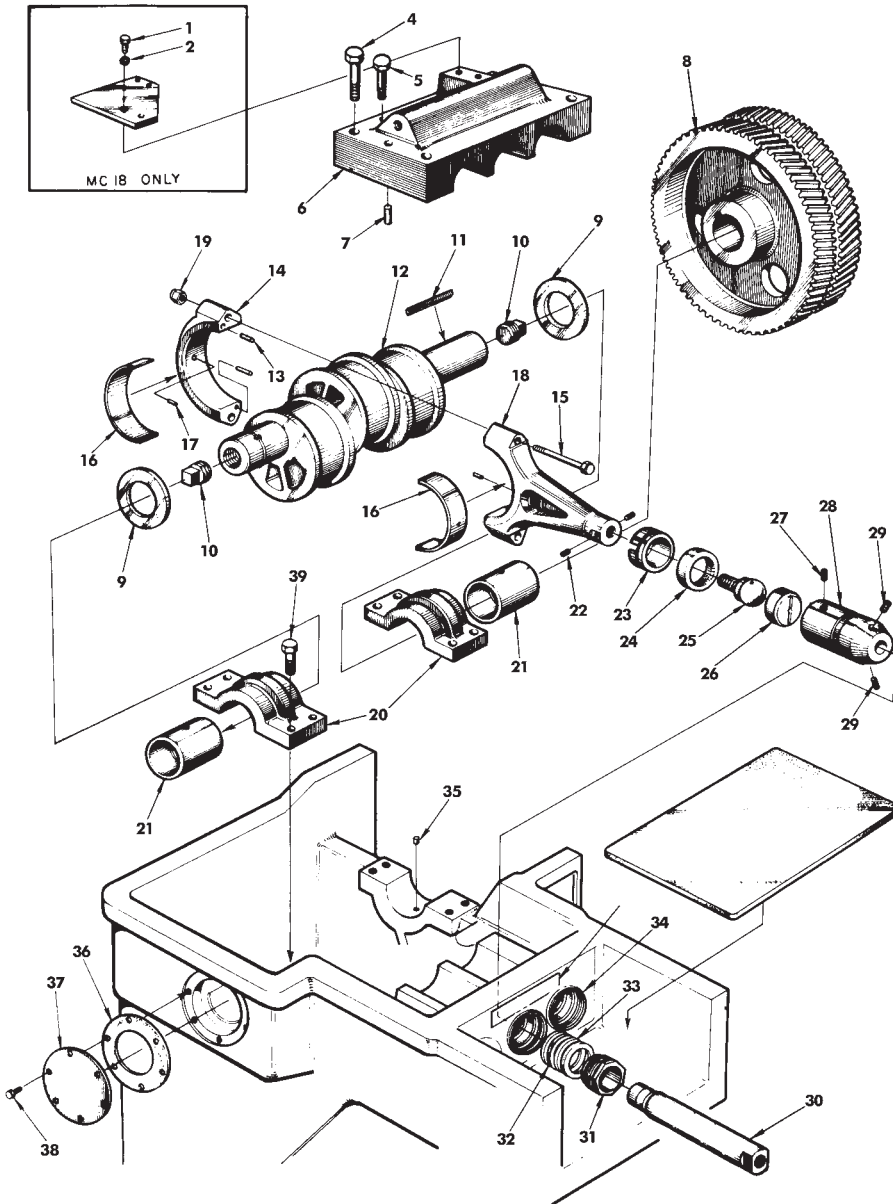


# MC SERIES

## MC SERIES MAIN DRIVE ASSEMBLY



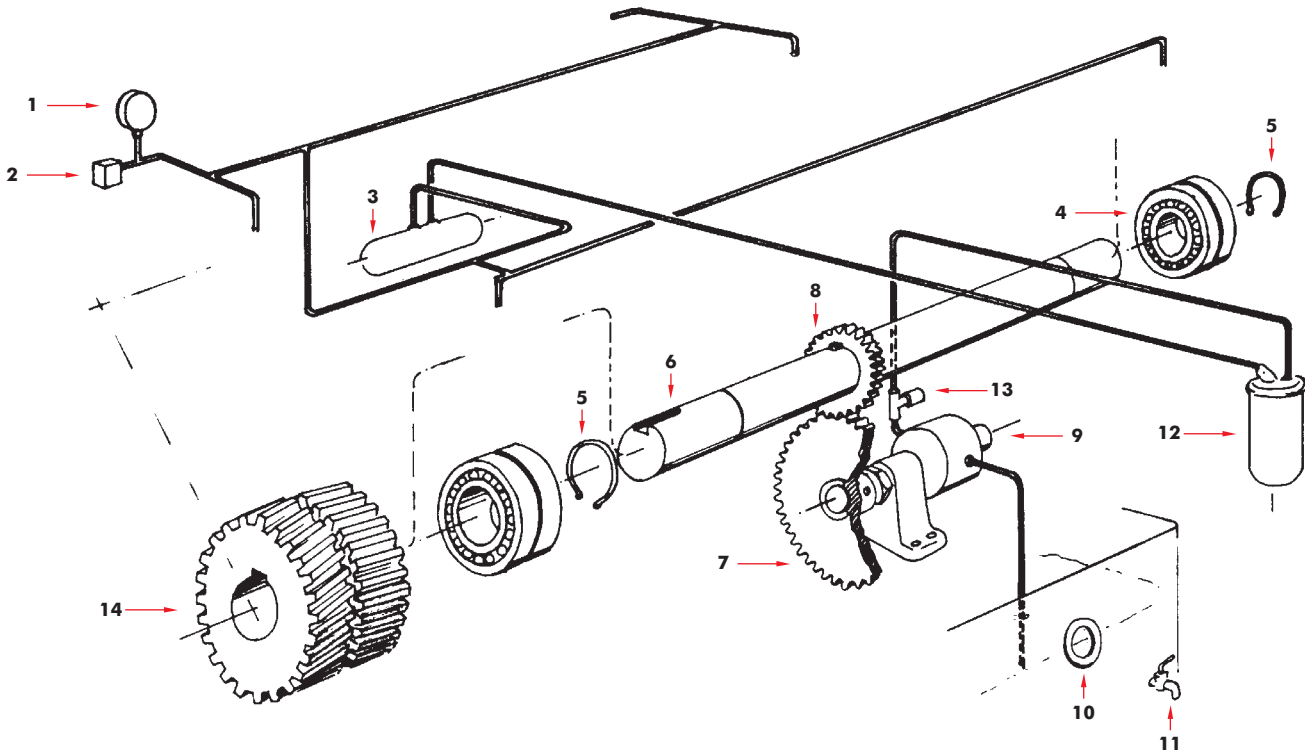
| MC SERIES MAIN DRIVE COMPONENTS |   |       |          |
|---------------------------------|---|-------|----------|
| Item                            | Description                                       | Quant | Part No. |
| 1                               | Oil Filter Mounting Brkt. Cap Screw               | 2     |          |
| 2                               | Oil Filter Mounting Brkt. Cap<br>Screw Lockwasher | 2     |          |
| 3                               | Pinion  | 1     |          |
| 4 & 5                           | Crosshead Cover Cap Screw                         | 4     |          |
| 6                               | Crosshead Cover                                   | 1     |          |
| 7                               | Crosshead Cover Dowels                            | 2     |          |
| 8                               | Gear  | 1     |          |
| 9                               | Eccentric Shaft Thrust Washer                     | 2     |          |
| 10                              | Eccentric Shaft Plug                              | 2     |          |
| 11                              | Gear Key  | 1     |          |
| 12                              | Eccentric Shaft Assembly                          | 1     |          |
| 13                              | Connecting Rod Dowel                              | 6     |          |
| 14                              | Connecting Rod Cap                                | 3     |          |
| 15                              | Connecting Rod Bolt                               | 6     |          |
| 16                              | Connecting Rod Bearing                            | 6     |          |
| 17                              | Connecting Rod Bearing Dowel                      | 6     |          |
| 18                              | Connecting Rod                                    | 3     |          |
| 19                              | Connecting Rod Nut                                | 6     |          |
| 20                              | Eccentric Bearing Cap                             | 2     |          |
| 21                              | Eccentric Shaft Bearing                           | 2     |          |
| 22                              | Crosshead Bearing Ball Set Screw                  | 6     |          |
| 23                              | Crosshead Bearing Retainer Nut                    | 3     |          |
| 24                              | Crosshead Bearing Retainer                        | 3     |          |
| 25                              | Crosshead Bearing Ball                            | 3     |          |
| 26                              | Crosshead Bearing                                 | 3     |          |
| 27                              | Crosshead Set Screw                               | 3     |          |
| 28                              | Crosshead   | 3     |          |
| 29                              | Plunger Adapter Set Screw                         | 6     |          |
| 30                              | Plunger Adapter                                   | 3     |          |
| 31                              | Packing Adjusting Screw                           | 3     |          |
| 32                              | Baffle Seal Packing                               | 6     |          |
| 33                              | Baffle Wiper Ring                                 | 6     |          |
| 34                              | Baffle Stuffing Box                               | 3     |          |
| 35                              | Eccentric Shaft Bearing Dowel                     | 2     |          |
| 36                              | Eccentric Shaft Cover Plate Gasket                | 1     |          |
| 37                              | Eccentric Shaft Cover Plate                       | 1     |          |
| 38                              | Eccentric Shaft Cover Plate Cap Screw             | 6     |          |
| 39                              | Bearing Cap Screw                                 | 8     |          |



Customers!  
Please enter part  
numbers specific to  
your machine in the  
column provided.




**MC SERIES LOWER DRIVE ASSEMBLY COMPONENTS**



| MC SERIES LOWER DRIVE COMPONENTS |                                 |          |
|----------------------------------|---------------------------------|----------|
| Item                             | Description                     | Part No. |
| 1                                | Oil pressure gauge              |          |
| 2                                | Low oil pressure cut out switch |          |
| 3                                | Oil cooler                      |          |
| 4                                | Drive shaft bearing             |          |
| 5                                | Drive shaft bearing circlip     |          |
| 6                                | Drive shaft                     |          |
| 7                                | Oil Pump driving gear           |          |
| 8                                | Oil pump driven gear            |          |
| 9                                | Mechanical oil pump             |          |
| 10                               | Oil level glass                 |          |
| 11                               | Oil drain tap                   |          |
| 12                               | Oil filter cartridge            |          |
| 13                               | Oil pressure relief 50-150psi   |          |
| 14                               | Main transmission gears         |          |

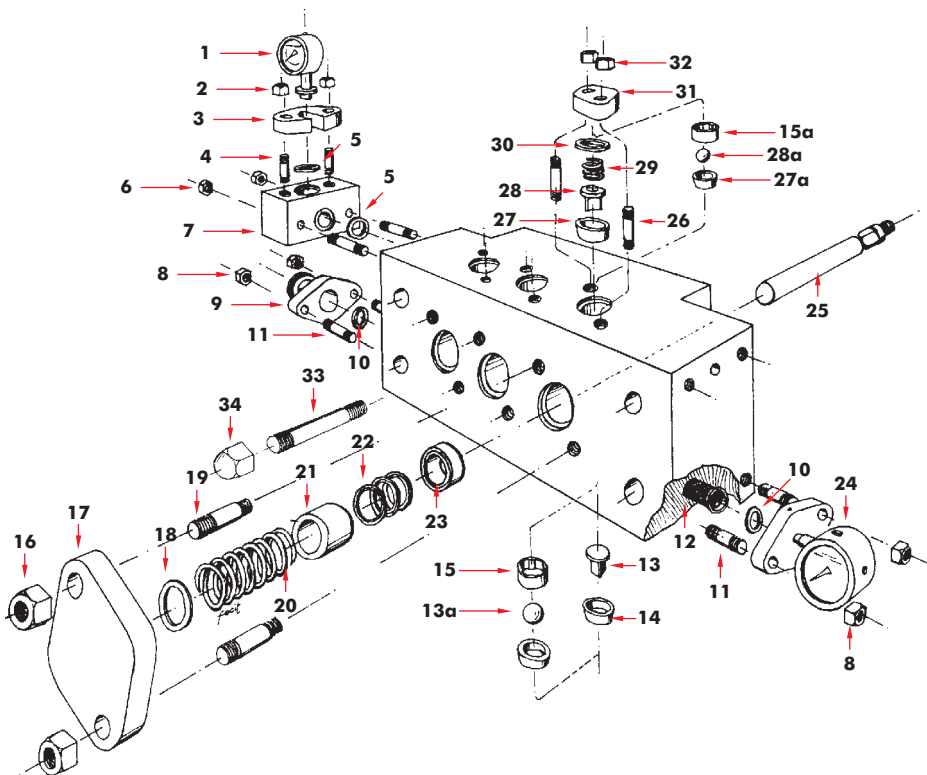
**Customers!**  
Please enter part numbers specific to your machine in the column provided.




MC SERIES BLOCK



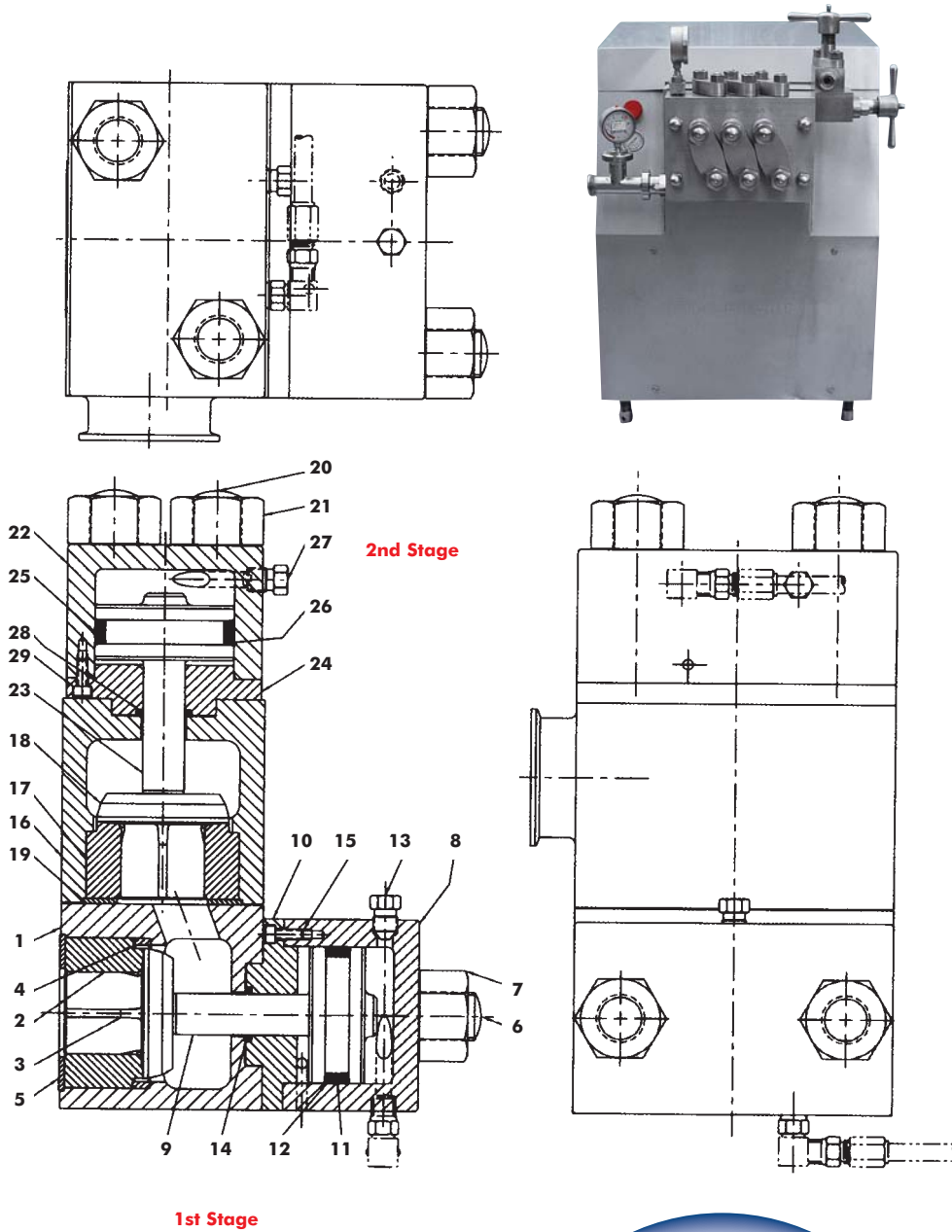
Customers!  
Please enter part numbers specific to your machine in the column provided.



| MC SERIES BLOCK COMPONENTS |                               |          |
|----------------------------|-------------------------------|----------|
| Item                       | Description                   | Part No. |
| 1                          | Product Pressure Gauge        |          |
| 2                          | Styrrup Clamp Stud Nut        |          |
| 3                          | Styrrup Clamp                 |          |
| 4                          | Styrrup Clamp Stud            |          |
| 5                          | Gauge & Gauge Block Gasket    |          |
| 6                          | Gauge Block Stud Nut          |          |
| 7                          | Gauge Block                   |          |
| 8                          | Cylinder Inlet Stud Nut       |          |
| 9                          | Cylinder Inlet Flange         |          |
| 10                         | Cylinder Inlet Gasket         |          |
| 11                         | Cylinder Inlet Stud           |          |
| 12                         | Strainer                      |          |
| 13                         | Suction Valve - Poppet        |          |
| 13a                        | Suction Valve - Ball          |          |
| 14                         | Suction Valve Seat - Poppet   |          |
| 14a                        | Suction Valve Seat - Ball     |          |
| 15                         | Suction Valve Guide - Poppet  |          |
| 15a                        | Suction Valve Guide - Ball    |          |
| 16                         | Front Cylinder Cap Stud Nut   |          |
| 17                         | Front Cylinder Cap            |          |
| 18                         | Front Cylinder Cap Gasket     |          |
| 19                         | Front Cylinder Cap Stud       |          |
| 20                         | Packing Adjusting Spring      |          |
| 21                         | Piston Ring                   |          |
| 22                         | Piston Packing Ring           |          |
| 23                         | Packing Adjusting Ring        |          |
| 24                         | Infeed Pressure Gauge         |          |
| 25                         | Piston                        |          |
| 26                         | Upper Cylinder Cap Stud       |          |
| 27                         | Discharge Valve Seat - Poppet |          |
| 27a                        | Discharge Valve Seat - Ball   |          |
| 28                         | Discharge Valve - Poppet      |          |
| 28a                        | Discharge Valve - Ball        |          |
| 29                         | Discharge Valve Spring        |          |
| 30                         | Upper Cylinder Cap Gasket     |          |
| 31                         | Upper Cylinder Cap            |          |
| 32                         | Upper Cylinder Cap Stud Nut   |          |
| 33                         | Cylinder Block Stud           |          |
| 34                         | Cylinder Block Stud Nut       |          |


**MC SERIES**

**Two-Stage HVA VALVE**



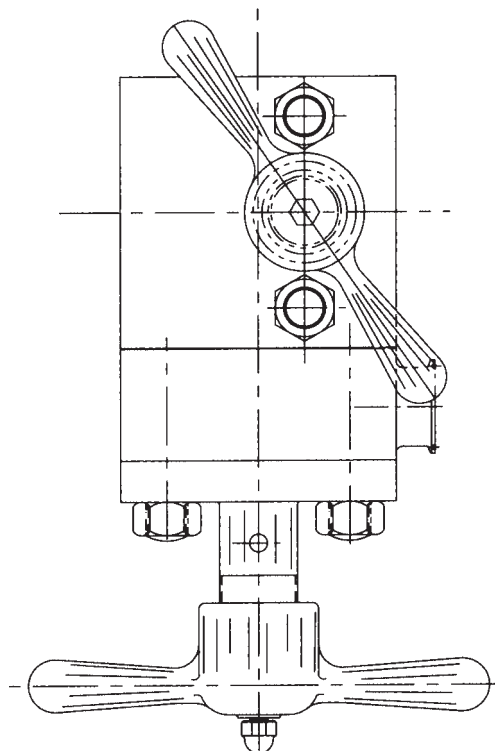
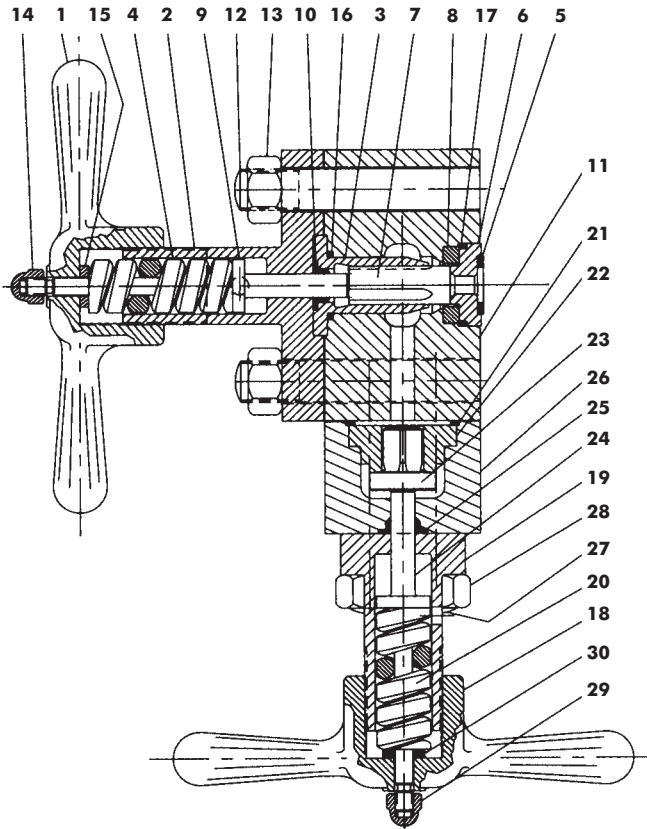
| MC SERIES TWO-STAGE HVA VALVE |                              |          |
|-------------------------------|------------------------------|----------|
| Item                          | Description                  | Part No. |
| <b>FIRST STAGE</b>            |                              |          |
| 1                             | Valve Body                   |          |
| 2                             | Homogeniser Valve Seat       |          |
| 3                             | Homogeniser Valve            |          |
| 4                             | Impact Ring                  |          |
| 5                             | Valve Seat Gasket            |          |
| 6                             | Valve Body (Stud)            |          |
| 7                             | Valve Body (Stud Nut)        |          |
| <b>HVA FIRST STAGE</b>        |                              |          |
| 8                             | Actuator Body                |          |
| 9                             | Actuator Valve Rod           |          |
| 10                            | Actuator Guide Plate         |          |
| 11                            | Actuator Seal O-Ring         |          |
| 12                            | Actuator Seal (Back-Up Ring) |          |
| 13                            | Vent Plug                    |          |
| 14                            | Valve Rod Seal               |          |
| 15                            | Actuator Body Screw          |          |
| <b>SECOND STAGE</b>           |                              |          |
| 16                            | Valve Body                   |          |
| 17                            | Homogeniser Valve Seat       |          |
| 18                            | Homogeniser Valve            |          |
| 19                            | Valve Seat Gasket            |          |
| 20                            | Valve Body (Stud)            |          |
| 21                            | Valve Body (Stud Nut)        |          |
| <b>HVA SECOND STAGE</b>       |                              |          |
| 22                            | Actuator Body                |          |
| 23                            | Actuator Valve Rod           |          |
| 24                            | Actuator Guide Plate         |          |
| 25                            | Actuator Seal O-Ring         |          |
| 26                            | Actuator Seal (Back-Up Ring) |          |
| 27                            | Vent Plug                    |          |
| 28                            | Valve Rod Seal               |          |
| 29                            | Actuator Body Screw          |          |

**Customers!**  
Please enter part numbers specific to your machine in the column provided.



## MC SERIES

### Two-Stage Manual Valve

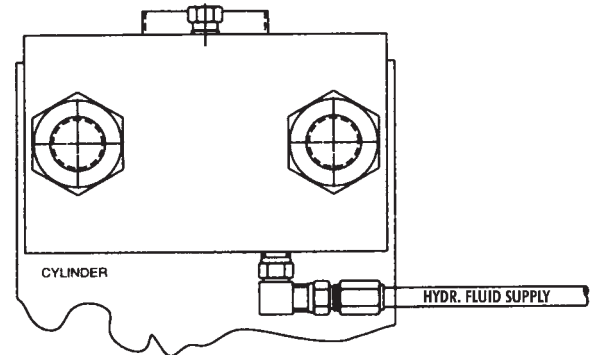
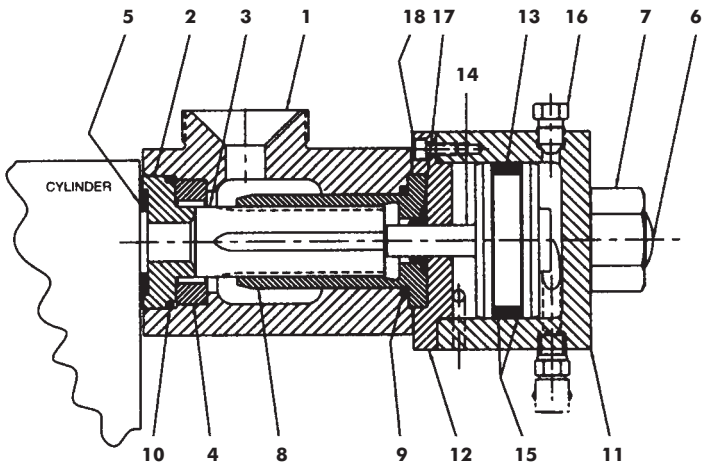
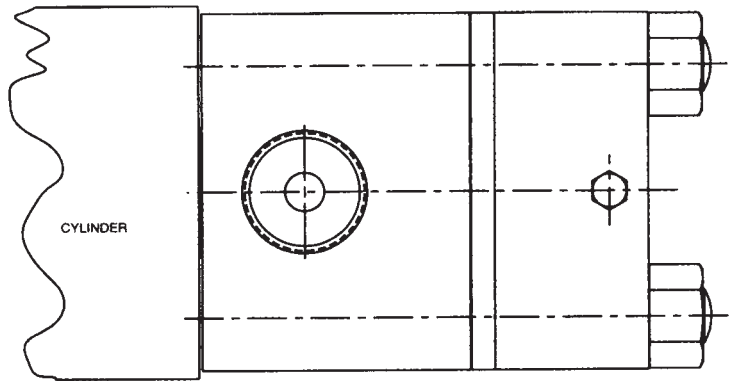


| MC SERIES TWO-STAGE MANUAL VALVE |                       |          |
|----------------------------------|-----------------------|----------|
| Item                             | Description           | Part No. |
| <b>FIRST STAGE</b>               |                       |          |
| 1                                | Handwheel             |          |
| 2                                | Handwheel Support     |          |
| 3                                | Valve Guide           |          |
| 4                                | Valve Rod Spring      |          |
| 5                                | Valve Seat Gasket     |          |
| 6                                | Valve Seat            |          |
| 7                                | Valve                 |          |
| 8                                | Impact Ring           |          |
| 9                                | Valve Rod             |          |
| 10                               | Valve Rod Packing     |          |
| 11                               | Valve Body            |          |
| 12                               | Valve Body (Stud)     |          |
| 13                               | Valve Body (Stud Nut) |          |
| 14                               | Valve Body Cap Nut    |          |
| 15                               | Valve Rod Washer      |          |
| 16                               | Valve Guide Gasket    |          |
| 17                               | Valve Seat O-Ring     |          |
| <b>SECOND STAGE VALVE</b>        |                       |          |
| 18                               | Handwheel             |          |
| 19                               | Handwheel Support     |          |
| 20                               | Valve Spring          |          |
| 21                               | Valve Seat Gasket     |          |
| 22                               | Valve Seat            |          |
| 23                               | Valve                 |          |
| 24                               | Valve Rod             |          |
| 25                               | Valve Rod Packing     |          |
| 26                               | Valve Body            |          |
| 27                               | Valve Body (Stud)     |          |
| 28                               | Valve Body (Stud Nut) |          |
| 29                               | Valve Body Cap Nut    |          |
| 30                               | Valve Rod Washer      |          |



**MC SERIES**

**Single-Stage HVA Valve**



| MC SERIES SINGLE-STAGE HVA VALVE |                              |          |
|----------------------------------|------------------------------|----------|
| Item                             | Description                  | Part No. |
| 1                                | Valve Body                   |          |
| 2                                | Homogeniser Valve Seat       |          |
| 3                                | Homogeniser Valve            |          |
| 4                                | Impact Ring                  |          |
| 5                                | Valve Seat Gasket            |          |
| 6                                | Valve Body (Stud)            |          |
| 7                                | Valve Body (Stud Nut)        |          |
| 8                                | Valve Guide                  |          |
| 9                                | Valve Guide Gasket           |          |
| 10                               | Valve Seat O-Ring            |          |
| 11                               | Actuator Body                |          |
| 12                               | Actuato Guide Plate          |          |
| 13                               | Actuator Seal O-Ring         |          |
| 14                               | Actuator Valve Rod           |          |
| 15                               | Actuator Seal (Back-Up Ring) |          |
| 16                               | Vent Plug                    |          |
| 17                               | Valve Rod Seal               |          |
| 18                               | Actuator Body Screw          |          |

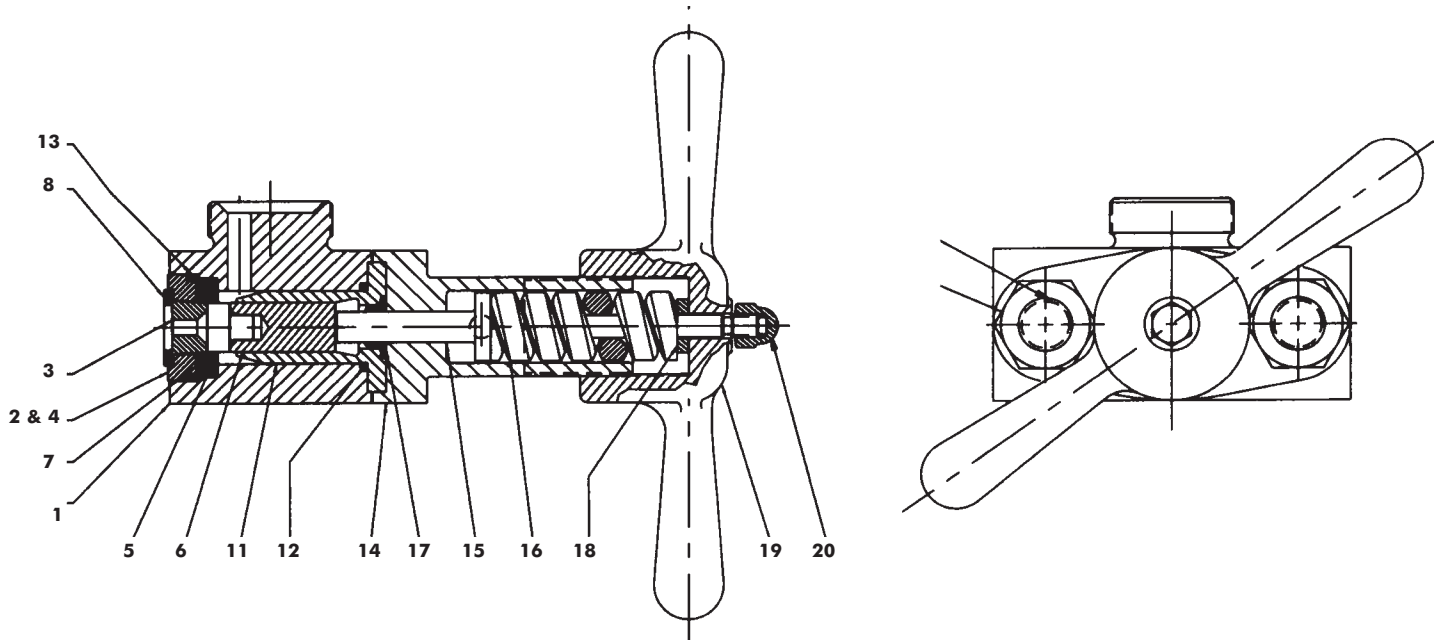
**Customers!**  
Please enter part numbers specific to your machine in the column provided.

**moody**



## MC SERIES

### Single-Stage Manual Valve



| MC SERIES SINGLE-STAGE MANUAL VALVE |  |          |
|-------------------------------------|--|----------|
| Item                                | Description                                      | Part No. |
| 1                                   | Valve Body                                       |          |
| 2                                   | Homogeniser Valve Seat Assembly<br>(Items 3 & 4) |          |
| 3                                   | Valve Seat                                       |          |
| 4                                   | Valve Seat Holder                                |          |
| 5                                   | Valve  |          |
| 6                                   | Valve Holder                                     |          |
| 7                                   | Impact Ring                                      |          |
| 8                                   | Valve Seat Gasket                                |          |
| 9                                   | Valve Body (Stud)                                |          |
| 10                                  | Valve Body (Stud Nut)                            |          |
| 11                                  | Valve Guide                                      |          |
| 12                                  | Valve Guide Gasket                               |          |
| 13                                  | Valve Seat O-Ring                                |          |
| 14                                  | Handwheel Support                                |          |
| 15                                  | Valve Rod  |          |
| 16                                  | Valve Rod Spring                                 |          |
| 17                                  | Valve Rod (Packing)                              |          |
| 18                                  | Valve Rod (Washer)                               |          |
| 19                                  | Handwheel Support                                |          |
| 20                                  | Valve Rod Cap Nut                                |          |

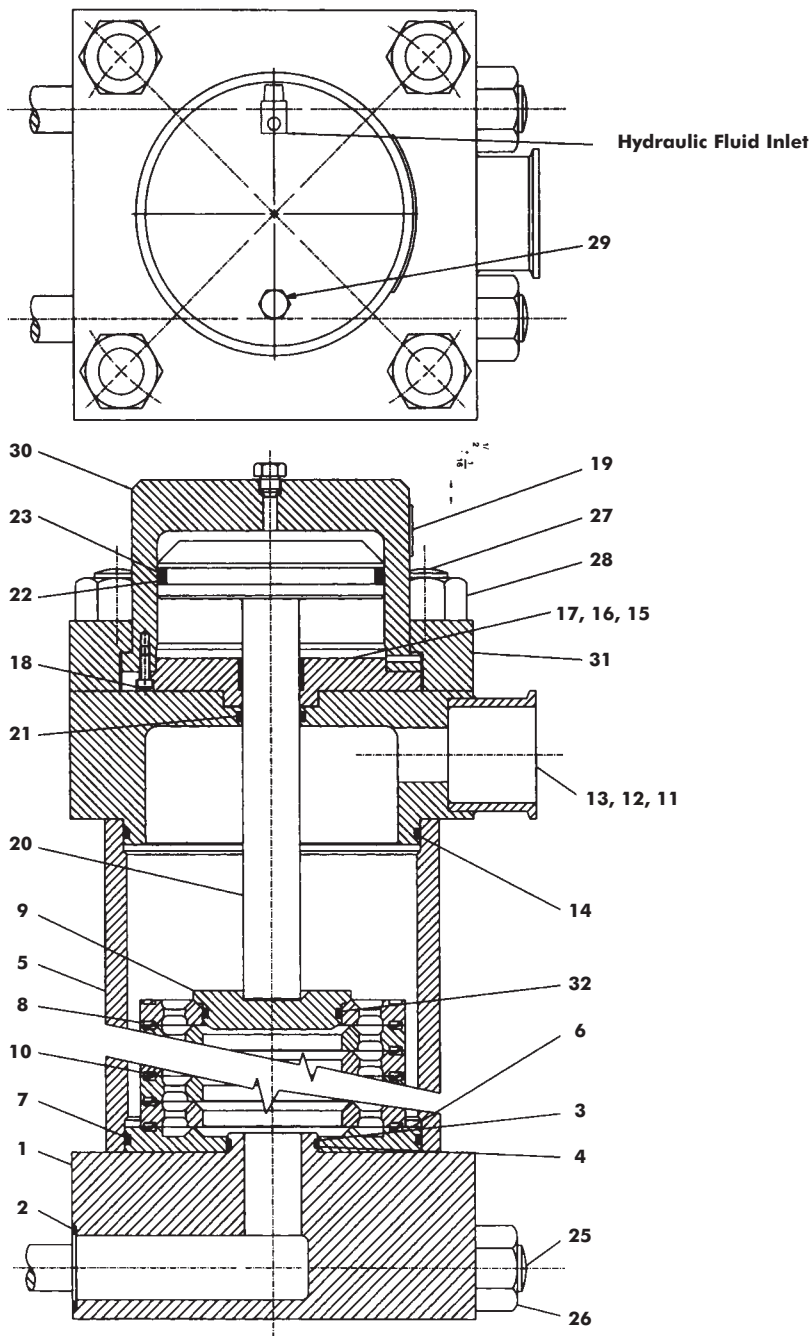
**Customers!**  
Please enter part numbers specific to your machine in the column provided.




**MC SERIES**

**Micro-Gap Valve Assembly**

| MC MICRO-GAP VALVE ASSEMBLY |   |          |
|-----------------------------|---|----------|
| Item                        | Description                               | Part No. |
| 1                           | Inlet Flange                              |          |
| 2                           | Inlet Flange Gasket                       |          |
| 3                           | Inlet Flange O-Ring Gasket                |          |
| 4                           | Inlet Flange O-Ring Gasket (Back-Up Ring) |          |
| 5                           | Micro-Gap Valve Body                      |          |
| 6                           | Micro-Gap Base Valve                      |          |
| 7                           | Micro-Gap Base Valve Gasket               |          |
| 8                           | Micro-Gap Valve                           |          |
| 9                           | Top Valve Plug                            |          |
| 10                          | Micro-Gap Valve Spring                    |          |
| 11                          | Discharge Flange Assembly                 |          |
| 12                          | Discharge Flange Assembly                 |          |
| 13                          | Ferrule                                   |          |
| 14                          | Discharge Flange Gasket                   |          |
| 15                          | Actuator Guide Plate Assembly             |          |
| 16                          | Actuator Guide Plate                      |          |
| 17                          | Actuator Guide Plate Bushing              |          |
| 18                          | Actuator Body Screw                       |          |
| 19                          | Sticker (Patent Identification)           |          |
| 20                          | Actuator Rod                              |          |
| 21                          | Actuator Rod Seal                         |          |
| 22                          | Actuator Rod (Back-Up Ring)               |          |
| 23                          | Actuator Road O-Ring                      |          |
| 24                          | Back Pressure Gauge                       |          |
| 25                          | Inlet Flange (Stud)                       |          |
| 26                          | Inlet Flange (Stud Nut)                   |          |
| 27                          | Micro-Gap Assembly (Stud)                 |          |
| 28                          | Micro-Gap Assembly (Stud Nut)             |          |
| 29                          | Vent Plug                                 |          |
| 30                          | Actuator Body Screw                       |          |
| 31                          | Actuator Body Clamp                       |          |
| 32                          | Top Valve Plug O-Ring                     |          |
| 33                          | Flow Restrictor                           |          |
| 34                          | Tri-Clamp Tee                             |          |
| 35                          | Tri-Clamp                                 |          |
| 36                          | Tri-Clamp Gasket                          |          |
| 37                          | Tri-Clamp Cap                             |          |



**Customers!**  
Please enter part numbers specific to your machine in the column provided.

**moody**

